

H. O. CO. ACREAGE 640 SUB NO. B.B.B. & C.R.R.Co.Sec.1 SURVEY Tyler COUNTY, ABSTRACT NO. 141

Acreage found 640 Patentee _____ Estimated by H. H. Shaw Date October 29, 1910
 Timber Rights Expire _____ Mineral Rights Expire _____ H. O. Co. Represented by _____
 Encroachments, Conflict, Trespass, Houses, Fences, Fields House
 Has Land Been Cut Over? Yes When 8 yrs. By Kirby Lumber Co. Class of Timber Cut Long Leaf Pine
 Topography Rolling Soil Sandy
 Adaptable for Agriculture Indications of _____

PINE REPRODUCTION

Area No.				
Acres	<u>630</u>			
L. L. Seedlings				
S. L. Seedlings				
L. L. 7"	<u>13M</u>			
L. L. 8" to 11"	<u>61M</u>			
S. L. 7"				
S. L. 8" to 11"				
Total Feet	<u>74M</u>			

MERCHANTABLE PINE (M. FEET) HERRING LOG SCALE—OUTSIDE BARK MEASUREMENT

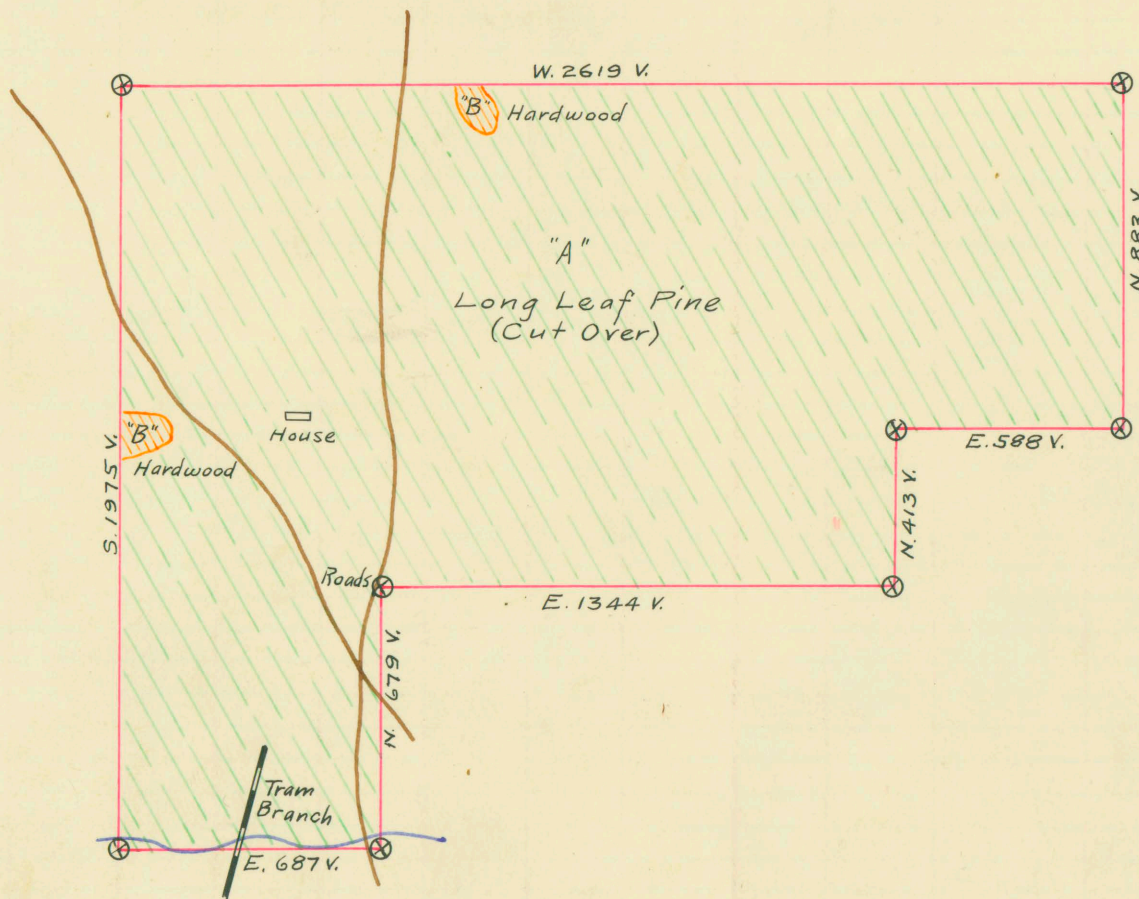
AREA NO.	ACRES	LONG LEAF		SHORT LEAF		LOGS TO TREE	LOGS TO M.	TOTAL FEET
		12" TO 16"	17" & UP	12" TO 16"	17" & UP			
	<u>630</u>	<u>320</u>	<u>381</u>			<u>3</u>	<u>7-10</u>	<u>701,000</u>
Total Feet								

Growth Vigorous Quality Smooth
 Isolated or Grouped Scattered Injury None
 Jeopardized by _____ Preferred Method of Logging Tram

HARDWOOD (M. FEET) SCRIBNER-DOYLE LOG SCALE—INSIDE BARK MEASUREMENT

Method of Logging	AREA NO.	ACRES	TUPELO GUM	RED GUM		CYPRESS		WHITE OAK		RED-OAK		HICK-ORY	ASH	BEECH	MAG-NOLIA	TOTAL	
				Ties	Feet	Ties	Feet	Ties	Feet	Ties	Feet					Feet	Ties
Nearest Stream		<u>10</u>								<u>75</u>							<u>75</u>
Reproduction <u>None</u>																	

Revised Courses and Distances



See next

ABSTRACT NO. 141

RECORD OF TIMBER CUTTING

DATE	PINE				HARDWOOD															
	LONG LEAF		SHORT LEAF		TIES	PILING	TUPELO GUM	RED GUM		CYPRESS		WHITE OAK		RED OAK		HICK-ORY	ASH	BEECH	MAG-NOLIA	
	12" TO 16"	17" UP	12" TO 16"	17" UP				Ties	Feet	Ties	Feet	Ties	Feet	Ties	Feet					
1911 October		3723	Public Road																	
1912 Apr	✓	155549	Camp 1																	
May	✓	6823																		
		166095																		
1920 Aug.		11160																		
Sept		118618																		
1921 Jan.		2848																		

Inspector W. O. Banks' form S.L. 6 #170 reports 30,000 feet uncut in S.W. corner

filled under heading camp 1.