

ANGELINA COLLEGE LIBRARY  
P. O. BOX 1768  
LUFKIN, TX 75901

ANGELINA COLLEGE LIBRARY  
JAN 12 1978  
LUFKIN, TX

Take  
One  
**FREE**

ANGELINA COLLEGE  
RECEIVED

JAN 12 1978

LIBRARY

THE

**LUFKIN**

**HOME BANNER**

SERVING.....LUFKIN, DIBOLL, CORRIGAN, GROVETON, CENTRAL, REDTOWN,  
POLLOK, BALD HILL, REDLAND, MOFFETT, APPLE SPRINGS, MOSCOW,  
FULLER SPRINGS, HUDSON, HUNTINGTON, HOMER, BURKE..... AND ALL  
POINTS IN BETWEEN!

VOLUME 2, NUMBER 2

JANUARY 11, 1978

**LUFKIN employees honored at banquet**



Recipients of Lufkin Industries service awards (L-R) are: Lee Stevens, Fred Morrow, Pat Stanley, Ben Elliott, Oliver McKay, T.L. Butler, Jack Gissler, David Bishop, Val Gallie, Charles Davis and Robert Jeffs. The men were honored at a special awards banquet held Jan. 5 in the Lufkin Civic Center.

Employees of Lufkin Industries and citizens of Lufkin gathered Jan. 5 in the Civic Center to honor 11 recipients of Lufkin Industries service awards.

Recipients included Lee Stevens, Ventura, Calif., 15 years of service; Fred Morrow, Odessa, five years; Pat Stanley, Houston, 10 years; Ben Elliott, New York City, 30 years; Oliver McKay, Denver, 25 years; T.L. Butler, New Orleans, 25 years; Jack Gissler, Dallas, 30 years; David Bishop, Atlanta, 20 years; Val Gallie, San Antonio, 30 years; Charlie Davis, Casper, Wyo., 10 years and Robert Jeffs, Seattle, Wash., five years.

Those attending heard guest speaker, Reagan Brown, Texas Commissioner of Agriculture discuss the role of the salesman in the American way of life with his own brand of homespun humor. He pointed out that everyone is a salesman, even Columbus, who had to convince

the Queen to help finance his trip to discover America.

**First baby**

Rhiannon Thomas became the first child born in Angelina County this new year when she bowed in at 2:26 a.m. Jan. 1 at Woodland Heights Hospital.

The proud parents of the baby girl are Joseph L. and Regina Thomas of Rt. 5 in Lufkin.

**Lufkin Home Banner**

**CLASSIFIEDS WORK!**

Eula Buckingham sold her kitchen range through Home Banner classifieds.

Let Home Banner personal classifieds work for you.

**Call: 639-1215**

Only \$2!

Four week limit,

**Representatives to meet Jan. 12**

**Commissioners delay action on TP&L request**

Lufkin City Commissioners voted unanimously to postpone action on a rate increase request by Texas Power and Light during their regular session Jan. 3.

City Attorney Robert Flournoy recommended the postponement, as the action will give the city an additional 120 days to review all aspects of the request. Representatives from various cities in the area will meet Jan. 12 to decide whether community action should be taken in dealing with TP&L's request for an 18.4 per cent rate adjustment.

If the rate hike is not approved by the Commission, according to Mayor Pitser Garrison, TP&L can then appeal to the Public Utilities Commission.

In other City Commission business, the Commission-

ers unanimously approved the first reading of a zone change application by El Chico Restaurant which would allow a private club to be constructed within the business.

Another zone change application, which would have allowed for the construction of a private club on property fronting on the north side of Kurth Drive, was rejected by the Commissioners. Five persons were present at the meeting to contest the application.

January 17 was the date set to hear the first reading of an ordinance on a request by Tom Gann for the development of a subdivision north and south of Whitehouse Drive between U.S. Hwy. 59 South. The date was also approved for the first reading of an ordinance on an

annexation and zone change application by R.H. Duncan for the development of a residential large subdivision. The subdivision, Brookhollow No. 9, is located on property south of and adjacent to Brookhollow No. 5 and No. 6 at the end of Live Oak Lane.

January 17 is also the date set for the first reading of an ordinance on an annexation request by property owners in the Herty area covering property east of the existing city limits and south of Hwy. 103 East.

In other action, the Commissioners awarded a bid by Moore Brothers of Lufkin concerning the construction of a junction at Shepherd and Ellis streets.

Also approved was the second and final reading of an ordinance on an annexation and permanent zoning

request by Sabine Investment Co. on Section IV of the Crown Colony Subdivision, located east of Hwy. 59 across from Angelina College.

The second and final reading of an ordinance amending the ordinance concerning the availability of pawn broker records to the police department was also approved. From now on, anyone pawning an item will be required to give their drivers' license number and the serial number of the object.

The first reading of an ordinance on a zone change application by Lufkin Industries to allow for construction of a parking lot fronting on Jefferson Avenue between Falvey and Raguet streets was also approved, as was a zone change application by Mrs. J.J. Young from residen-

tial medium to residential medium and commercial district, special use on property fronting Timberland Drive between McCall Drive and Duncan Street.

Lufkin City Commission members will meet again in regular session at 5 p.m. Jan. 17.

**Examinations for Clerk, Carrier positions set**

The U.S. Postal Service announces the examination for Clerk and Carrier positions at the Lufkin Post Office.

According to Postmaster Joe C. Anthony, applications will be accepted through Jan. 20. The examination will be given to establish a register of eligibles

from which future Clerk and Carrier vacancies in the Post Office will be filled.

All qualified applicants will receive consideration for employment without regard to race, religion, color, national origin, sex, age, political affiliations or any other non-merit factor.



# From Wall Street to Main Street

By Jerry Benson, Registered Representative with Edward D. Jones and Co., Members of the NY Stock Exchange.



How is Yield to Maturity calculated on Bonds?

Figuring maturity yields is simply accounting for the difference between the 100 per cent of principal that the issuer has promised to return to the investor at maturity and the price paid for the bonds. If one pays more than 100 per cent, the excess is prorated annually over the life of the bond and subtracted from the yield; if one pays less than 100 per cent, the discount, prorated, is added to the yield.

The basic principle can be illustrated by a bond that matures in ten years, pays 9 per cent on the principal and is purchased for 110 per cent. The current yield is thus about 8.2 per cent. However the additional 10 per cent of principal paid for the bond reduces the 9 per cent interest rate approximately 1 per cent per year. Roughly, the one would earn about 8 per cent to maturity instead of 8.2 per cent or 9 per cent. If the same bond were purchased at 90 per cent of the principal the current yield would be exactly 10 per cent. Roughly 1 per cent per year would be added to the maturity yield to boost it to around 10 per

cent.

This rule-of-thumb method does not account for compounding of interest for each year on the difference between the purchase price and par. The exact maturity yield may be found in bond yield tables. To show the difference between a rough and precise computation, the yield to maturity on the bond bought at 110 per cent with an interest rate of 9 per cent and current yield of 8.2 per cent would be 7.53

per cent and the bond purchased at 90 per cent with an interest rate of 9 per cent and current yield of 10 per cent would yield 10.65 per cent to maturity.

### ON BUSINESS TERMS

#### Accrued Interest

Interest accrued on a bond since the last interest payment was made. The buyer of the bond pays the market price plus accrued interest. Exceptions include bonds that are in default and income bonds.

### STOCKS OF LOCAL INTEREST

30 Industrials	793.49
20 Transportation	200.17
15 Utilities	109.24
VOLUME	26,150,000
Shares traded as of 3 p.m.	
Jan. 6, 1978.	

Selected tabulation of stock prices as of 3 p.m. Jan. 6, 1978

Am. Tel & Tel	59 7/8	International Paper	40 1/8
Black & Decker	15	J.C. Penny	35 1/4
Central SW	15 3/4	La. Pacific	12 1/8
Chrysler	12 7/8	Owens-Illinois	21 3/8
Dr. Pepper	13 1/2	Republic of Texas	30 1/8
Entx	22 1/8	Sears	26 5/8
Exxon	45 5/8	St. Regis	29 7/8
Ford	43 1/4	SW Bankshares	25 1/2
General Motors	59 3/4	Texaco	26 3/4
Gulf Oil	25 1/2	Texas Utilities	21 5/8
Gulf States Util.	13 1/2	Time	37 3/4
Gulf Western	11 1/2	U.S. Steel	30 1/2
Hstn. Ind.	29 1/8	Woolworth	18
IBM	267		

Quotations by Edward D. Jones & Co., 504 South

## Classifieds continued from Page 27

### Motorcycles

**For Sale:** '76 - 500 Suzuki, 2,300 miles, excellent condition. \$850. Call 9-2964.

**For Sale:** Honda 350 Twin, \$150.00. Street bike, very clean, good work bike. Phone 875-2958.

**For Sale:** '71 Yamaha 360. Ready for road or dirt. \$350. 632-2415.

**For Sale:** 1976 Honda 550SS, \$995; 1974 Suzuki GT250, \$595; 1971 Honda CB100, \$195; 2 cycle trailer, \$150. 634-9235.

**For Sale:** '70 Suzuki 18CCI, Still under warranty, electric start, HiLo Range, \$700. 634-9432.

**For Sale:** 400 Suzuki \$800. Will consider offer. Phone 878-4715 Day 86-4610 after 5:00.

**For Sale:** 1977 Suzuki, GS 750 - Scarlet Paint, new rubber, superior cond. \$1675. Phone 824-2802.

**Christmas Specials:** Honda TL 125 - \$395, Honda XL 175 - \$525, Honda XL 250 - \$725, 1975 Models, very clean. Phone 632-4866.

**Must Sell:** 1976 Harley-Davidson Sportster, chopped, excellent condition. Call 853-2614.

**For Sale:** Motorcycle, 1971 Yamaha 360 CC. Ready for dirt or street. \$350. 2-2415.

**For Sale:** 1974 Yamaha 750 motorcycle, 23,000 miles, like new. Call 4-4555 or 4-7083.

**For Sale:** '76 GL1000 Honda with crash bar, sissy bar & luggage rack, 3,500 miles. \$2,300. 639-1922 after 5 p.m.

**For Sale:** Hondas, 125 - \$450, 175 - \$575, 250XL - \$750, 350XL - \$800. Clean, '75 models, custom chopper. 632-4866.

**For Sale:** 1974 Yamaha Endura 100. Motor completely overhauled. Only \$175. Call 632-2573 after 4. 2

**For Sale:** 1975 BMW, fully dressed. See at 1614 S. Chestnut. Priced right to sell. Must see to appreciate. 2

**For Sale:** K-1 Series, 750 Honda, fully dressed with 2 wheel trailer. See at 1614 S. Chestnut. 2

### Misc. For Sale

**For Sale:** Pecans, shelled or not shelled. Call 639-1838.

**Must Sale:** 450 Honda, 1970 Rambler, 1967 Chev. 1971 Terry Bass Boat, Lincoln Arc. welder. Phone 632-1941.

**For Sale:** 40 Channel Side Band CB Base w/power mike, lenier, rotary beams, and ground planes. Call 875-2664.

**For Sale:** 350 Brick - \$40, 3 speed bicycle, Frieden calculator, timing light, bees wax. 634-5187.

Cont. on Pg. 4

## Jerry Oliver

### For Complete Remodeling & Repair Work

Remodel Your Kitchen or Bath.

Convert Your Garage, Car port or Roof.

Panel Your Den.

NEED AN EXTRA BEDROOM OR BATHROOM?



Call

632-5120

## Country Girl Beauty Shop

Ford Chapel Rd.

632-5009

### COME BY & PICKUP CARD

This Card Entitles The Bearer To One Haircut Or One Shampoo & Set Once A Month For 12 Consecutive Months ALSO

Bearer Will Receive A 10% Discount On All Other Products & Services.

**COST \$22.50**

By Appointment Only

Linda Walton Open Owner-Operator Tues.-Sat.



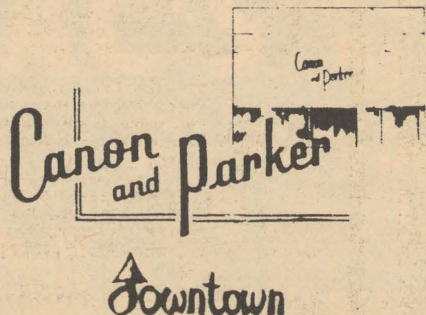
## From our Ladies Department

Our Most Famous Name Lingerie... don't miss this...robes, gowns, slips, panties, and bras...a very special group!

Misses' Dresses, Pantsuits, Blouses, Skirts, Pants, Vests, Blazers, Sweaters. . . all our great names are in this group, plus all the new looks!

Junior Dresses, Jumpsuits, RT Set (3 -pieces), Coats, Blouses, Sweaters, Pants, Tops, Skirts. . . all this group is especially for juniors!

# 1/3 Off!



Open 9:30 to 5:30

## YOUR SIGN GETS THE ATTENTION OF PASSING PEOPLE

PLUS THE MESSAGE YOU DISPLAY IN BIG EASY TO

RENT OR BUY THIS LIGHTED FLASH SIGN INCREASE SALES 634 2011 - 634 2321

READ LETTERS ON

LIGHTS UP DAY OR NIGHT...WORKS 24 HOURS FOR YOU!!!

CHANGE THE MESSAGE AS OFTEN AS YOU LIKE

300 Letters Included

Signs good for Increasing Business plus Birthday, Anniversary, Church or other Messages.

LOW COST OPERATION...LOWEST PRICES

TO BUY OR RENT

call **JACK'S**

**634-2321 or 634-2011**

1703 N. Raguet

Lufkin, Texas



You'll Find A World  
Of After Christmas  
Bargains At  
**War Surplus**

Owner: Manager  
**Michael A. Allbritton**  
121 E. Frank Ave. 634-4555

From  
**your County Agent**  
by Sandra Risinger



Energy costs are skyrocketing and all of us are looking for ways to stay warm in our homes this winter and still save on fuel bills.

Did you know that the clothing you wear can make a difference? The more you wear, the warmer you will be. But do you know how much?

A man who puts on a jacket over his shirt, for example, will be as comfortable at 70 degrees F. as he previously was at 74.5 degrees F. A woman who wears slacks instead of a

skirt and puts a light long sleeved sweater over her blouse will feel as comfortable at 75 degrees F. as she previously did at 78 degrees F.

According to the experts, clothing changes can make significant differences in our comfort. But there are other factors that contribute to the warmth of clothing.

Absorbency is one factor. The more absorbent a fabric, the warmer it is. Generation of body heat is another factor. The cleanliness and dryness of clothing will also affect its warmth.

Although we recognize the significant contribution of proper clothing to warmth, there is still much research to be done. Angelina County residents have the opportunity to assist with this research.

Extension Clothing Specialists at Texas A&M University and local County Extension Agents are conducting result demonstrations in selected counties throughout the state. The demonstration will last six to eight weeks. It will involve reducing the

home temperature 1 degree to 2 degrees per week until a minimum of 6 degrees reduction has been reached. Clothing needs will be adjusted to maintain personal comfort.

Each family participating in the study will keep a simple one-page record of the temperature, humidity, precipitation, wind speed and general description of clothing worn by the family to maintain desired comfort.

Because the entire family will be affected by the temperature adjustments, it is important that they all agree to participate. The family can live in any type of home - apartment, house, mobile home, etc. - as long as the inside temperature can be adjusted. Any size family will be acceptable for the study.

If you would like to contribute to this important research, contact Mrs. Sandra Risinger, County Extension Agent, 634-3111. Results of the study from throughout the state will be released before next winter so that we can all benefit from your experience.

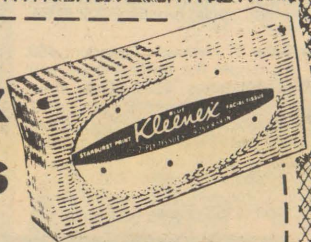
**perry's**

**COUPON DAYS**



**Jergens's Lotion**  
10 Oz.  
**97¢**

**Kleenex Tissues**



200 Count **47¢**



**Listerine Antiseptic**  
14 Oz. **99¢**

**Tampax**  
40 Ct.  
Reg. or Super



**\$1.88**



**Vitalis**  
4 Oz.  
**99¢**

**Flicker Ladies Disposable Razor**



**\$1.17**

**ALL THREE STORES**

•Downtown •Angelina Mall •Chestnut Village

**CARPET CLEANED**  
**\$19.95** LIMITED TIME

any living room and hall (regardless of room size)

ANY LIVING ROOM DINING ROOM (or dining area) and HALL CLEANED (Regardless of Size) **\$29.95**

YES! WE DO TINT AND DYE CARPET RIGHT IN YOUR HOME

WE'LL CLEAN ANY ADDITIONAL ROOM WITH EITHER THE ABOVE SPECIALS **\$11.95**

CALL NOW FOR APPOINTMENT **634-2998**

LIVING ROOM & HALL <b>\$29.95</b>	<b>Carpet Steam Cleaned</b> MOST CARPETS DRY IN 1-TO 1 1/2 HRS.	LIVING ROOM HALL & DINING ROOM <b>\$39.95</b>
-----------------------------------	--	---

NOT DELIGHTED — DON'T PAY!

WARRANTY... Our expert crews will clean your carpeting BETTER than you have ever seen before, or your money is returned IN FULL. Upholstered furniture, area and Oriental carpets included in this pledge.



**GUARANTEE SYSTEM**  
GUARANTEE CARPET CLEANING & DYE CO.

Rt. 7 Box 220

Lufkin, Texas 75901



# Classifieds continued from Page 2

## Misc. For Sale

**For Sale:** Piano, like new Wurliitzer spinet \$695; 250 Yamaha Enduro \$295. good cond. 4-7978.

**For Sale:** Tandem axle, two-horse trailer, new floor, good condition, good tires. Quarter horse mare, subject to reg., riding tack. Palmino mare, good cow horse, good for kids, tack. 15 ft. Bass Boat, trailer, 45 HP. Chrysler motor. Call 853-2313 after 5 p.m.

**For Sale:** Practically new electric range, gold, very clean, call after 5, 2-5393.

**For Sale:** 35 MM Rocoh camera with electronic flash, 1 year old, excellent condition. \$90. Phone 829-5776.

**For Sale:** Brand new! Shot only once Marlin 30-30. \$90. 639-1603.

**For Sale:** Decorated cakes. Debbie Fitzgerald. 875-2552.

**For Sale:** Early American Couch. Call 4-4704.

**For Sale:** International farm tractor. Excellent condition. Call 634-3022 Day or 824-2057 after 5.

**For Sale:** 2 pc. Black living room suit. \$50 - Phone 2-4170 after 6:30 p.m.

**For Sale:** About 300 solid red common bricks for patios or sidewalks. \$50.00 Call 2-3219.

**Attention:** \$100 Reward (\$25 per item or \$100 maximum for everything). For the return of any personal property (high school & college diplomas, photos, yearbooks & etc.) of Patricia Molandes which was taken from the U-Store-It on Denman during the Christmas Holidays. Call 634-5245 after 5:00. 2

**For Sale:** Bleach Bottle Doll. Pixi dolls, sofa pillows & other articles. Phone 632-5423.

**For Sale:** 3 speed, 26" Sears Bike with yellow carrier seat for child, \$50. Beautiful Zenith stereo console, excellent condition, \$150. Coffee table with center storage compartment, \$40.00 632-2609.

**For Sale:** 2 Portable air compressors on wheels. One '70 model Leroi, \$1200 & one '75 Model, Leroi, \$2500. Call 876-6632.

**For Sale:** Furniture, copier, \$25., hospital bed, \$35, large vented gas heater and others. 639-1604.

**For Sale:** Tow Glider, 30 ft. wing-span, 1 place, 802 construction completed, w/plans. \$250. No license required. See at 1400 Warren.

**For Sale:** 500 shares Texas National Bank stock. Need to sell to go to college. Asking \$15.00 a share. Write Box 2661, Sam Houston Station, Huntsville, Texas 77341.

**For Sale:** Skamper Hardtop folding camper for long bed pickup. Sleeps 4. Gas or electric Ref. stove, sink. Very Clean. \$1750. Phone 824-2191.

**For Sale:** Pigeons, extra giant Homers & Red Cornesaux. SXUABS, \$3.50 each. Good for table use. Call 632-6844.

**For Sale:** New saddle, never been on horse. Cost \$850, sell for \$600. Also Mercury 15 HP Outboard Motor \$125. Antique Deacon Bench. \$50. Call after 5:00, 632-6222.

**For Sale:** Lady Kenmore dishwasher \$75. Johnson motor, 4 HP. \$75. Trailer tie and 5 lug wheel, \$25. Can see at 509 Hoskin St.

**For Sale:** 2 - '75 Lufkin Set out Pulpwood or log trailers, 38 ft. long, 1000 x 20 Dayton wheels. \$8000 for both or \$4,250 each. Phone 829-5886.

**For Sale:** '77 LHS Annual, New, Two Chev. 14" mag wheels. 632-1092.

**For Sale:** 54 pc. toole sterling - 65 pc. Haviland China (Blue bell pattern), whirl pool bath (new). 2940 ohn Zedditt.

**For Sale or Trade:** apt. size gas stove. Want butane stove. Have no phone, write: Frank Matchett, P. O. Box 98, Huntington, TX.

**For Sale:** 138,000 BTU Arkla-Servel, central air furnace. \$150 or best offer. See at 2101 Dan St.

**For Sale:** Baldwin "Wonder Chord" organ for church or home. \$750. Phone 634-7616.

**For Sale:** Golf clubs and bag, Spaliking Aluminum shaft. 2 thru 9 irons and 1-3-4 woods. \$70. Call 634-2466.

**For Sale:** 1 cast iron old Wash Pot, perfect condition. \$40. 632-6857.

**For Sale:** Metal ironing board \$6.00. Men's 14K, gold ring, \$35.00. Aluminum Christmas Tree, \$6.00. Tree Stand, \$1.50. 634-6461.

**For Sale or Lease:** 44 Lime Dragline, 70 ft. Boom, good condition. Call 4-5667.

**For Sale:** rifle, Cal. 50 Hawken. \$120. Call after 6 p.m. 824-2940.

**For Sale:** McCollough Chain Saw. 14 in. cutting bar. Automatic oiler. Excellent Con. \$125. 632-6702.

**For Sale:** Electroponic stereo system including recorder. Good condition. Reasonable offer after 5 call 824-2388 or 632-1671.

**For Sale:** 8 ft. Spanish style stereo console. Continental Brand name. AM-FM Radio & Record changer. Good condition. \$125. 634-6938.

**For Sale:** Artley Clairnet, 2 years old, like new, \$125.00 cash. Call 875-2820.

**For Sale:** Gas dryer, \$35, Phone 829-3458.

**For Sale:** 3 pc. Sectional Couch with matching chair. Can be seen at Fountain Royal Apt. #60.

**Let Sherry Peterson** furnish beautiful organ music for your next party, reception, social function. 327-5055.

**For Sale:** 3" Hydraulic Cylinder, \$50. 12' Aluminum flat bottom boat with trailer & motor, \$200. Gas stove (Dixie), \$10. Cabinet & sink, \$10. Coleman Stove, \$5. 1 Coleman lantern, \$5. two saddles with bridles & blankets, \$40 each. Electric fan, \$20. Kerosene heater, \$20. Central heating unit, \$40. 1977 Harley Davidson 1200, \$300 & take up notes. 2

**For Sale:** Transit level bull float, taper, Toto tiller. Call 632-3570. 1

**For Sale:** 23" Zenith Console, black & white TV, excellent cabinet, works good. \$75 or best offer. Phone 875-2880. 1

**For Sale:** Electric Shirt Ironer, car vacuum cleaner, venetian blinds, radio and wheels for 1963 Chevy II. Call 4-5187. 1

**For Sale:** 8 Track Car tape player. Fairly new, reasonably priced. Call 639-2088.

**For Sale:** China cabinet, drop-leaf table and six chairs, three bar stools. Phone 831-2721. 1

**For Sale:** 8x10 portable building, insulated, carpeted, panelled & wired. Also electric pole. Will sell separately. 639-2761. After 5- 639-2763, 634-6539 or 854-2567.

**For Sale:** 3 floor furnaces, bicycles, one boy's and one girl's. Baby crib. Small fan & electric heater. Can see at 508 Pinehurst in Lufkin.

**For Sale:** Wedding gown and veil, white, size 10, store-bought. \$225 for only \$75. 824-2998.

**For Sale:** Complete beauty shop & equipment, house and lot. Cheap. Hwy. 287, Groveton, Texas. Together or separate. Phone 713- 642-1580.

**For Sale:** Hollywood box springs, inner spring mattress. Like new. From Hardy Estate. \$60 set. Chairs, etc. 879-3107.

**For Sale:** '71 Camaro, fine cond.; 1976 Suzuki RM 125A, excellent condition. 634-5875. 2

**For Sale:** Stetson One Hundred John B. Stetson Co. Stetson Hat. Biege, size 7 for \$75. Brand new, just doesn't fit. Phone 4-6398. 2

**For Sale:** Firewood. \$45 - you pick up, \$55 - we deliver & stack. 824-2050. 2

**For Sale:** 19" Black & White Sears TV. Excellent condition. Call 2-2554. 2

**For Sale:** 14 cu. ft. refrigerator, women's clothes 12 to 16. 634-7364. 2

**For Sale:** 4 Firestone Radial Tires H78-15 good, \$80. Couch \$100. New velvet couch & chair, \$500. 632-6535. 2

**For Sale:** 17" RCA Portable color TV in good working order. Call 632-7836 after 5 p.m. 2

**For Sale:** '69 Cutlass Wagon, needs motor work, \$200 or trade up. Also 360 Honda. Corriagan 398-4858 after 4. 2

**For Sale:** Complete Queensize Spanish Bedroom Suite, \$300. 634-2843 after 4. 2

Recorded **need good news?** Call anytime

**Central Baptist Church**  
1818 Timberland Dr.  
Lufkin, Texas  
CALL 632-1514

Pat McBride, owner  
Gina Ivy, Hairstylist

**Pat's Hairstyling Salon**  
in Hudson Shopping Center  
Hwy. 94 - 875-2664

Specializing in Men's and Women's hairstyling  
Special for December Only Body Waves

\$2.00 off Men's & Women's cut & hairstyles  
reg. \$25.00 - run for \$15.00

**GARY WALLACE**  
**CONCRETE**  
**FLOOR COVERING**

• Foundations • Driveways  
• Patios Diboll

829-3497

**CRAFT SHOP**  
1101 N. Temple  
Diboll, Texas

**Playhouse of Crafts 1978**  
Class schedule beginning Jan. 16th will have.

**Shirley Hunter**  
Teaching Acrylics.

**Rose Ella Forsythe,**  
Teaching Oils, Tole, Rubouts and Decorative Painting

**Call or Come By and register -- Some classes already filled.**

**Georgia Feazle,**  
Author of 3 books on Rubout will be at the work shop Feb. 11th.

**Reliance Services**  
"Your Chain Saw Headquarters"  
We Service What We Sell

Buy Where The Pros Buy!

★ Homelite  
★ McCulloch  
★ Poulan  
★ Stihl

**FREE** Chain With Each New Saw

2216 N. Timberland 634-6332

**NACO**  
DIV. OF RELIANCE SERVICES, INC.

**NACO PROPELLER SERVICE**

Complete Marine Propeller Service

Dial **634-6332**

2216 N. Timberland Dr. Lufkin

**Joyous New Year**

Off-season savings. That's one reason why. When we're not so busy, we can give you a better buy. And more attention. **Miss the price increase.** Inflation seems never to stop, and normally a new season brings higher prices. Right now you can get next year's pool for last year's prices.

**We'll tell you the truth about Fiberglass.** And that's for free. We'll tell you about the best and let you decide we can give you the whole truth and let you make your own decision. **Don't tear your yard up during growing season.** It seems to hurt more when the grass is green and growing. Call us now and we'll be through before then. **Have your pool for a full season.** You'll be able to enjoy your pool from spring through fall. Ask anyone who gets a pool in the summer and they will tell you it is hard to wait for when it is 100 degrees in the shade. So, give us a call. We'll build you a pool while it's too cold to use it so you won't miss a minute when it gets hot. Plus you'll save money.

Please send me my free copy of the San Juan Pool Planning Package

**San Juan Pools**  
**SAN JUAN POOLS**  
Rt. 4, Box 854A  
Lufkin, Texas - 875-3971

Name.....  
Address.....  
City..... State.....  
Zip..... Phone.....

Come to Where You Have a Choice.

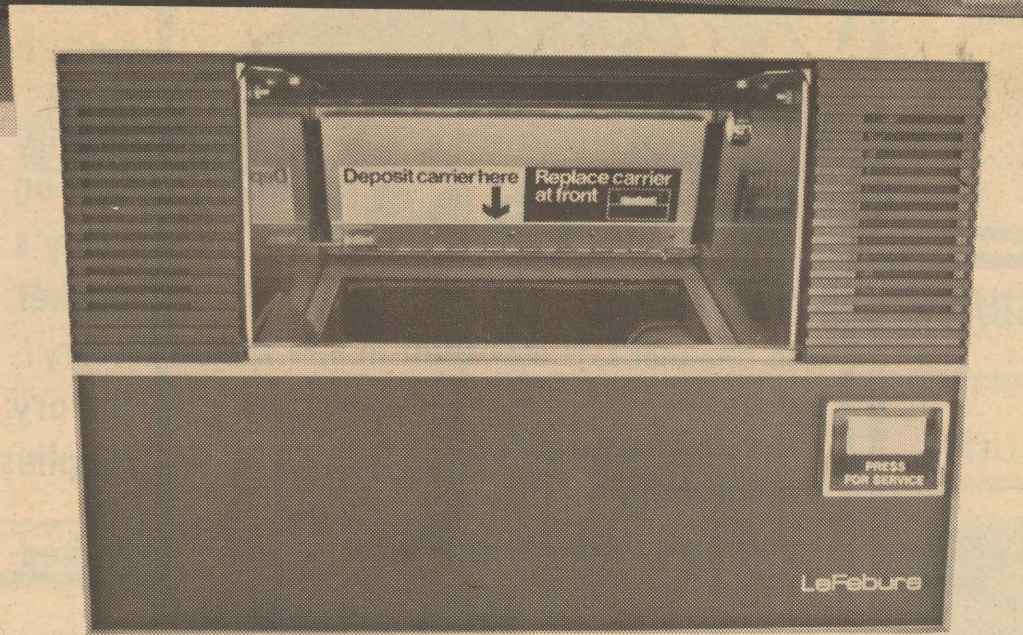
**SAN JUAN POOLS**  
HUDSON -- 875-3971  
Pleasing Customers Since 1958



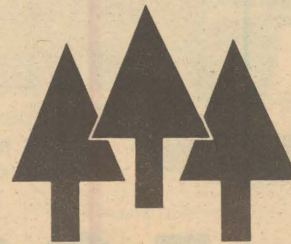




# Sorry you had to wait, but now we're ready!



Frankly, we just got too big for our windows. But now that our twelve new drive-in lanes are open, the wait is over. You'll see the best in drive-in banking facilities at First Bank & Trust. Enter our new drive-in bank on Second Street (just south of our main bank building) and you'll see something else. You'll see how fast and convenient drive-in banking can be. At First Bank and Trust, we'll watch your wait!



# FBT

**FIRST BANK & TRUST**  
LUFKIN, TEXAS / MEMBER F. D. I. C.

Member Republic  
of Texas Corporation



# Sale of the Year

## For the Women

<b>LONG DRESSES</b>	<b>1/3 OFF</b>
<b>MISSES SPORTSWEAR</b>	<b>1/3 TO 1/2 OFF</b>
<b>MISSES DRESSES</b>	<b>1/3 TO 1/2 OFF</b>
<b>JUNIOR SPORTSWEAR</b>	<b>1/3 TO 1/2 OFF</b>
<b>JUNIOR DRESSES</b>	<b>1/3 TO 1/2 OFF</b>
<b>LINGERIE</b>	<b>1/3 OFF</b>
<b>SKI WEAR</b>	<b>1/4 OFF</b>
<b>JEWELRY</b>	<b>1/3 OFF</b>
<b>ACCESSORIES</b>	<b>1/3 OFF</b>

## For the Men

Long Sleeve	
<b>DRESS &amp; SPORT SHIRTS</b>	<b>1/4 OFF</b>
<b>SWEATERS</b>	<b>1/4 OFF</b>
<b>VELOUR SHIRTS</b>	<b>1/4 OFF</b>
<b>SPORT COATS</b>	<b>1/4 OFF</b>
<b>SUITS</b>	<b>1/4 OFF</b>
<b>LEATHER COATS</b>	<b>1/4 OFF</b>
<b>WINTER COATS (All weather and Down)</b>	<b>1/4 OFF</b>
One Lagre Group	
<b>MEN'S SHOES</b>	<b>1/3 OFF</b>



3049 ANGELINA MALL  
PHONE 632-6133

LUFKIN, TEXAS 75901



# Area Sports

From my corner.....



by Jim Daher

Notre Dame handily beat Texas, 38-10, and lays a valid claim on the number one. Alabama shells Ohio State and they too are claiming top spot. After all, Woody Hays doesn't often fall 35-6. Arkansas,

with four players suspended around huge controversy, manhandled mighty Oklahoma, laying their claim. All things considered, this has been the closet

**Cont on Pg 19**



Winners in the Adult - Junior Bowling Tournament are (L-R) Jim Vest, John Strisko, Kevin Evans, Brandy Canida, Terri Hawkins, Robert Strisko and Dwayne Telford.

## Adult-Junior Tourney draws 72 bowlers

Seventy-two bowlers took part in the annual Adult-Junior Bowling Tournament held Dec. 26 at Lufkin Lanes.

Taking first place in the Pee Wee Division, for ages 5 through 8, was Brandy

Canida, with a total score of 1,069.

In the Bantam Division, ages 9-11, Kevin Evans took first place with 1,033 with John Strisko coming in a close second with 1,023 points.

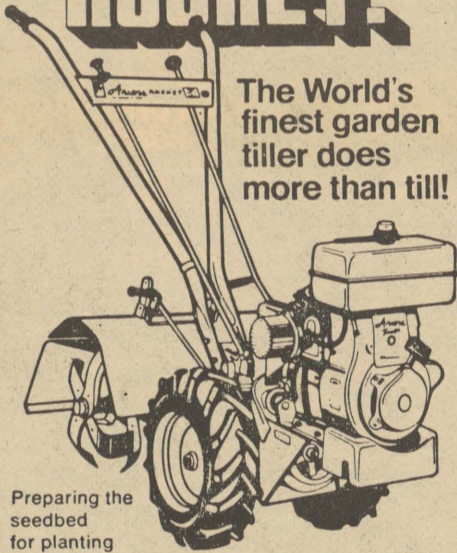
Robert Strisko finished on top of the Junior Division with a 1,223 point total. Terri Hawkins took second place in that division, which is for ages 12-14, with a 1,086 score. Finishing in the lead in

the Senior Division, for ages 15-21, was Dwayne Telford with a 1,220 point total. Jim Vest placed second with 1,192 points.

Each bowling division member bowled with an adult partner.

# Ariens

## ROCKET



The World's finest garden tiller does more than till!

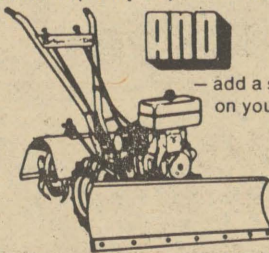
Preparing the seedbed for planting in the spring, maintaining a weed-free garden during summer and turning under compost in the fall is what the ruggedly built Ariens Rockets were designed to do. Both the well-known 7 HP and the new 5 HP Rockets have:

**Easy handling** — literally a one hand operation with these well-balanced machines

**Convenient controls** — positioned on the handlebars within easy reach of the operator

**Transportation capability** — tines disengage and power driven wheels easily move the Rocket to another location

**Side-to-side handlebars** — available on the 7 HP Rocket—quickly adjusted—no tools necessary



**AND**  
— add a sturdy front blade on your Rocket and you have dependable snow removal or ground leveling capability. The Rocket — a rugged year 'round power package from Ariens.

■ Come see the Ariens Rocket Tiller today. Your Ariens dealer is in the Yellow Pages.

## AIR COOLED ENGINE

**& EQUIPMENT COMPANY**  
320 E. FRANK 4-2244

## Joe Hackney Reports,



I hope that everyone has settled back into the everyday grind and that the holidays were good ones. While most of you were nestled here among the pine trees, enjoying clean air and mild days, I was out in West Texas gasping for breath in what is fastly resembling the Sahara Desert. I went back to my old

home town of Weinert which is about 70 miles north of Abilene. They haven't had any moisture of measurable amounts since last spring. you think that Sam Rayburn is low, you can drive across the majority of places that I normally fish on and hunt ducks and geese on. It was almost impossible to use

dogs to hunt out there because of the fine layer of dust covering absolutely everything. You would think that these conditions would reduce the amount of quail that you would find there. Not so. That area is absolutely teeming with

**cont on Pg. 13**

## BENT TIMBERS RESTAURANT

in Ramada Inn  
**DAILY NOON BUFFET HAS RETURNED**

Mon-Fri 11-2 p.m. \$2.85 Tea or Coffee

Sun Buffet 11-2 p.m. \$2.95 Tea or Coffee

Joe and Faye Prince Owners and Operators

## Panthers defeat John Tyler

Lufkin's dramatic, overtime win over John Tyler last Friday, left them one game in front of the pack in league play. Chris Wortham tossed in 20 points to get game honors and Kenneth Johnson and Danny Hartsfield added 8 apiece.

In the fourth quarter, the Panthers suffered a poor shooting streak and ended up with only 2 points in the stanza. The defense was stingy though and the game was knotted at 46 when the quarter ended. In the overtime, the Tyler Lions were held scoreless as the

**Cont on Pg. 19**

## LUFKIN LANES

FEATURING  
OPEN BOWLING  
Every Day & Night

We Also Have

- ★ Foosball & Air Hockey
  - ★ Pool tables ★ Pin Ball!
- COME IN AND JOIN  
THE FUN TODAY!

LUFKIN LANES  
632-5656



Wal-Mart Sells for Less Wal-Mart Sells for Less Wal-Mart Sells for Less Wal-Mart Sells for Less Wal-Mart Sells for Less Wal-Mart Sells for Less

# WAL-MART

# January

# Pre-Inventory **SALE**

## Fashion Fabrics

Entire Stock of FASHION FABRICS

Regularly Priced  
\$1.97 Yd.

**Now** 3 Days  
Only

**\$1.00**  
Yd.

### CHOOSE FROM:

- ★ 100% Polyester Double Knits
- ★ Solid Fashion Colors
- ★ Polka Dots ★ Stripes ★ Designs
- ★ Plaids ★ and Many More

- ★ Fleece Robe Material
- ★ Jersey Knits ★ Suedes



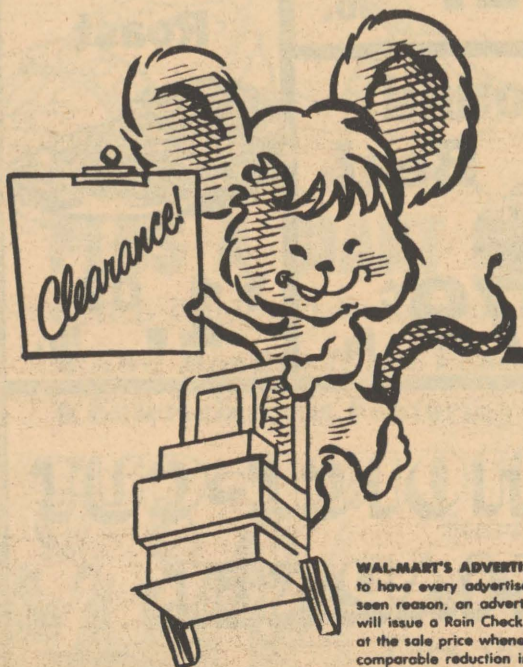
**Sorry:**

**No Rainchecks**

**No Lay-A-Ways**

**We reserve the right to limit quantities**

**Sale Prices Good Wed., Jan. 11 Thru Sat., Jan. 14**



WAL-MART'S ADVERTISED MERCHANDISE POLICY — It is our intention to have every advertised item in stock, however, if due to any unforeseen reason, an advertised item is not available for purchase, Wal-Mart will issue a Rain Check on request, for the merchandise to be purchased at the sale price whenever available, or will sell you a similar item at a comparable reduction in price. THANK YOU FOR SHOPPING WAL-MART! Can You Really Afford to Shop Anywhere Else?

Open 9-9 - Mon.-Sat.  
Towne Square  
shopping center.

# WAL-MART

Wal-Mart Sells for Less

Wal-Mart Sells for Less

Wal-Mart Sells for Less Wal-Mart Sells for Less Wal-Mart Sells for Less Wal-Mart Sells for Less



**Horticulturalists meet**

**Nurserymen's short course offered Jan. 22-25**

Texas nurserymen will hear discussions on a wide range of topics at the annual Nurserymen's Short Course at Texas A&M University, Jan. 22-

25. The short course will be in the Rudder Center, with registration beginning at 8:30 a.m. Jan. 23, announces Everett Janne, Horticulturist with the Texas Agricultural Extension Service. A social will be held the preceeding evening at the Ramada Inn.

Discussions on "Employee Motivation" and "Nursery Theft" will highlight the first morning session. After lunch, participants will be brought up to date on growing succulents and ferns and new trends in foliage varieties. A private applicator pesticide training session will con-

clude the afternoon program.

Keynote discussions the second day of the program concern "Advertising," "Landscaping for Energy Conservation," and "Landscape Bidding and Pricing."

The evening of Jan. 24 will feature a review of

plant culture and identification in preparation for the Texas Certified Nurserymen's Examination to be conducted the next morning.

Janne encourages all Texas nurserymen, regardless of size of operation, to make plans to attend the short course.

**CARRIE'S CASUALS**

2604 N. Raguet

**January CLEARANCE Sale**

25% to 50% off

ON ALL FALL & WINTER MERCHANDISE

Store Hours  
9:30 to 6:00 p.m.  
Tues. thru Sat.



**Effective savings program depends on careful planning**

An effective savings program depends on careful four-step planning, says Mrs. Linda McCormack, family resource management specialist with the Texas Agricultural Extension Service, The Texas A&M University System. Planning steps include a goal, a set amount, a schedule and a program

that pays the maximum legal rate of interest.

Mrs. McCormack offers these easy steps for developing a savings program:

(1) Examine motives and write down a specific goal with a possible date for meeting it--this year, five years, or 20 years from now.

(2) Determine how much money is necessary to reach the goal.

(3) Set up an actual schedule.

In deciding on a schedule, rework your spending plan to determine a realistic

amount left for savings.

Then, set aside a fixed amount each week or month in order to achieve the goal.

Do not count on a "flexible amount" of money for savings each time--such as money left over at the end of the week or month.

There never seems to be any left over.

(4) Determine which program pays the maximum legal rate of interest. This should be a major factor in selecting a savings program, and it will affect the "where" and "how" of saving.

**FIRE PREVENTION PRESERVES FORESTS**

**The Angelina Coffee Shop**

(OF THE ANGELINA HOTEL)

**CATFISH ALL YOU CAN EAT**

Friday 5:30 til 8:30 p.m.

**\$3.00**

Waitress needed in the

**Rex Club**

**Angelina Hotel**

S. First & Shepherd Ave.

**Swift Protein**

**HEAVY BEEF**

**NEW DELI!**

**OPEN 9-6 7 DAYS A WEEK**

**Sirloin Steak**



**\$1.59 lb.**

**Round Steak**



**\$1.49 lb.**

**Ground Beef**



**79¢ lb.**

**Boneless Chuck Roast**



**\$1.09 lb.**

**RAY'S CHOICE-CUT MEAT MARKET**

1006 John Redditt

639-1822

Lufkin



## Merchants not 'buying' consumer discount idea

Consumer discounts for cash purchases are now legal, but most merchants are not "buying" the idea, reports Dr. Carolyn McKinney, a Family Resource Management Specialist.

Recent Federal Reserve Board rulings permit merchants to give up to a five per cent discount for cash purchases.

However, the rulings give the choice to the merchant, and, generally, merchants are not offering the cash discounts, Dr. McKinney says.

Explaining the new idea, Dr. McKinney says that merchants generally "build in" a cost factor (that means adding a little to the price) on products they sell.

The "built-in" cost is to cover consumer-credit expenses.

Now the new rulings simply make it legal for merchants to "cut out" or omit

the added cost factor by giving "discount prices" to cash customers, Dr. McKinney says.

Still, the rulings do not say merchants must give the discounts, the specialist emphasizes.

Dr. McKinney is with the Texas Agricultural Extension Service, The Texas A&M University System.

"Nevertheless, it won't hurt for cash customers to ask for a discount," the specialist says.

"Increased consumer interest and requests may motivate some stores to offer cash-discount plans," she adds.

As for why many merchants are not offering the discounts, Dr. McKinney cites three major reasons.

"Credit card customers are essential for many marketing and promotional efforts, so merchants want to encourage their patronage."

"Also, some merchants fear that cash discounts would curb impulse buying and that credit customers might delay a purchase until they can pay in cash.

"And, finally, charging two prices for every item complicates the merchant's operation."

Thus gigantic increases in cash-discount plans are not happening, and they are not expected, she says.

## ESP master to speak at Chamber banquet

Dr. R.L. Noran, Master of ESP, will be the featured guest speaker for the 58 Annual Angelina County Chamber of Commerce Banquet scheduled for Thurs., February 9, 7:30 p.m. at the Lufkin Civic Center. Tickets are on sale at the Chamber office, 515 S. First, at \$10.50 per person.

Bob Bowman, Banquet Chairman, in making the announcement said, We think Dr. Noran, as our banquet entertainment, will be one of the most provocative and spine tingling speakers you will ever hear. He is not a traditional banquet speaker but an entertainer that will keep your attention from start to finish."

Dr. Noran is a parapsychologist and hypnotherapist whose demonstration of Extrasensory Perception evidences the psychic potential that lies within man's untapped mental reservoir.

Most recently he was guest speaker at the an-



Reatha Duke was the winner in Mode-O-Day's \$50 wardrobe giveaway. Left to right is Duncan Garner of Lufkin National Bank, Reatha Duke and Mode-O-Day Owner Dana McKibben.

American Cancer Society

Give to the American Cancer Society.

**DISTINCTIVE DECOR**

113 W. Denman

FRIGIDAIRE

HERITAGE OF QUALITY REFLECTED IN -

Design, Material and Craftsmanship

"We service what we sell"

639-2409

**Frigidaire**  
Home Environment Products

Coupon

**Massingill's Meat Market**  
216 E. Burke Ave.

This coupon will get you **5¢ OFF** per pound on a **HINDQUARTER** ordered during January.

634-9211

Coupon

**THANK YOU**  
Overland Express...

**MEET THE GIANT AT THE CASTILE RESTAURANT AND CLUB**

**Club 4-7 p.m. Mon-Fri. IF YOU DARE PLUS A GIANT SCREEN TV!**

- NFL Regional Games-each Sun at 1 p.m.
- ABC Monday Night Football at 8 p.m.
- Entertainment Featuring **Sunshine**

Starting at 8 p.m. Tues. thru Sun.

**DON'T GAMBLE**

Through backtracking, frequent stops to call in, missed messages, frustrated customers and clients, and lost business, you're paying **MUCH MORE** than a Motorola Pager would cost.

With a Motorola BEEPER you can be in constant contact with your office or home and thus eliminate backtracking, unnecessary stops, unhappy customers, and missed messages.

Service That Meets All Communication Requirements

Tailored to meet all Professional and Business needs.

Specialized services for .Physicians . Attorneys . Dentists . Businessmen . Salesmen . Repairmen . Deliverymen . Government Officials . Service Personnel

24 HOUR OR PART-TIME SERVICE

Wake-Up Call Service . Advertising Response . No Office or Phone Needed . Specially trained Operators . Mail Forwarding . Vacation Service

COME BY AND FIND OUT WHICH ONE FITS YOU

**PUBLIC COMMUNICATIONS, INC.**  
121 N. Second Lufkin, Texas 75901  
(713) 632-6689



**Aid for the handicapped**

# Opportunity Center begins laundry service

Lufkin Workshop and Opportunity Center, Inc. is now offering its one-day laundry service to the public. The Center, which is an outgrowth of the Lufkin Council for Retarded Children, is a non-profit corporation which provides vocational evaluation and vocation and work adjustment programs to the mentally or physically handicapped.

The opening of the laundry service makes a total of two of the Center's programs now open to the public. The other program involves furniture repair and refinishing. There are several other work adjustment programs at the center; all of which are designed to expose clients to real-life work situations,

which will hopefully help them to become employable.

Lufkin Workshop and Opportunity Center has contracts with several industries in Lufkin. Some of the companies which are currently supplying sub-contracts are: Lufkin Industries, LUFKIN's Trailer Division, Texas Foundry, Southland Paper, Lufkin Telephone Exchange, Greater Lufkin Ford, the Salvation Army, Deep East Texas Mental Health and Mental Retardation and janitorial and yard maintenance for eight local companies.

Clients in the program are trained in the field in which they show the most aptitude. Training is available in the following

areas: collating, packaging, salvage, custodian duties, maintenance, laundry, assemble, food services, office duties, wood-working, drilling, sewing, small engine repair and service, clerk duties and automobile cleaning and preparation.

The 15-member staff at the Center is currently working with 70 students. Many of these clients are referred by Lufkin Public Schools, according to Program Director Ross Parker. Others, he adds, are MHMR outpatients, doctor referrals or self-referrals.

Parker maintains that each client has an individual program plan. He adds that, although a program plan may call for the modification of a deficiency, the basic idea behind the program involves maximizing a person's potential. "We emphasize the strengths of a person," Parker says.

The laundry program offers the regular laundry services, such as washing, drying, folding and ironing, at low prices. Laundry brought to the Center by 9 a.m. may be picked up by 3 p.m.

Lufkin Workshop and Opportunity Center is located at 1305 S. Third, behind the Kiwanis City Park. More information can be obtained by calling 632-5577.



**Laundry service employees**

Clients of the Lufkin Workshop and Opportunity Center work in the laundry program, as well as other programs, in order to become exposed to real-life work situations. This training is designed to aid the mentally or physically handicapped person to become employable.

# THIS IS

# JANUARY

**STORE-WIDE INVENTORY SALE!**  
**Selections In Every Department.**  
**THURS -SAT Jan. 12th-14th**

All Fall & Winter *Up To*  
**COATS & SWEATERS ..... 50% OFF**

**NEW SHIPMENT OF WRANGLER**

**UP TO 50%**

**CLEARANCE**  
**Boys Wrangler Coats and Turtle Necks.**

**CLEARANCE**  
**Girls Wrangler Corduroy Pantsuits & Gauchos, Jeans, Tops, Jumpers.**



1003 N. TIMBERLAND DR. 713-632-2442

## Value of antiques climbing

Antiques can provide enjoyment today and outstanding investment tomorrow, says Sue Young, Housing and Home Furnishings Specialist with the Texas Agricultural Extension Service, The Texas A&M University System.

The value of antiques keeps on climbing while new furniture depreciates from the moment it leaves the store, she says.

For an "eclectic" look that emphasizes a variety of styles and periods, combine antiques with other pieces. They are equally at home in a contemporary or traditional setting.

In shopping for antiques, rely on a reputable antique dealer, who is the consumer's best asset, Mrs. young says.

In comparing items, look for those that are in good condition, while avoiding excessively refinished pieces.

Also, remember that an antique is anything that was in existence one hundred years before the date of purchase.

## Why is Texas Power & Light asking for a rate increase?

On December 21, 1977, Texas Power & Light Company applied to all incorporated cities and towns it serves and to the Public Utility Commission of Texas for authority to increase its rates for electric service.

The rate schedules will result in an 18.4 per cent increase in the gross revenues of Texas Power & Light Company.

In coming weeks, our application will be under consideration by the cities and towns served by the Company and by the Public Utility Commission.

Texas Power & Light wants you to know why we are asking for this rate increase.

### 1 TP&L MUST CHANGE THE FUELS NEEDED TO PRODUCE ELECTRICITY FROM NATURAL GAS...

1. The State of Texas requires a phase-out of the use of natural gas for generation of electricity. It appears that Federal law may require even faster phase-out than required by State law.
2. Gas supplies are limited.
3. Rising cost of gas: Our average cost in 1975, \$.89 per million BTU's in 1976, \$1.23 per million BTU's in 1977, \$1.45 per million BTU's

### ... TO LIGNITE AND NUCLEAR POWER

1. A large supply of lignite is available in Texas.
2. Lignite is cheaper. Average cost in 1977 was \$.42 per million BTU's.
3. The use of lignite instead of gas saved our customers \$87 million in one year.
4. The future also favors nuclear power as a cheaper means of producing electricity. First nuclear unit in 1981.

### 2 TP&L MUST BUILD MORE ELECTRICITY PRODUCING PLANTS

1. Our customers are increasing at the rate of about 20,000 per year, and...
2. The demand for electricity will double in 10 years.
3. Plants using high-priced natural gas must be phased out, held for peak-use periods, or rebuilt to use coal.

### 3 THE COSTS OF NEW PLANTS ARE INCREASING

1. Today, lignite plants cost 3 times as much as gas-fueled plants: in 1972, \$135 per kilowatt in 1975-80, \$275 per kilowatt\* in 1980-85, \$477 per kilowatt\*
2. Nuclear plants cost 6 times as much as

gas-fueled plants: in 1980-83, \$740 per kilowatt\*

3. Our construction costs have increased from \$64 million in 1968, to \$279 million in 1977, to \$326 million in 1978\*.  
\*estimated

### 4 TP&L MUST INSTALL COSTLY POLLUTION-CONTROL DEVICES

1. Government regulations now require pollution-control devices that cost millions of dollars.
2. On a new plant in 1972, anti-pollution devices cost \$2.50 per kilowatt. Today, these costs have jumped to \$59.40 per kilowatt.
3. On four units now under construction, cost of anti-pollution devices will be \$178,000,000.
4. Anti-pollution devices increase generating costs 15 to 20%.

### 5 TP&L MUST STAY FINANCIALLY STRONG IF WE ARE TO PROVIDE FOR THE FUTURE, BUT...

1. Interest coverage (earnings available to pay interest) is down from 6 times in 1968 to 3.7 times in 1977.
2. Average interest cost is up from 4.3% in 1968 to 7.6% in 1977.
3. Rate of return on investment is not adequate.

### TP&L'S PRESENT RATES WILL NOT SUPPORT...

- COSTS TO MEET INCREASING CUSTOMER DEMAND FOR ELECTRICITY
- CONSTRUCTION COSTS NECESSARY TO CHANGE FUELS USED TO PRODUCE ELECTRICITY
- AN ADEQUATE RETURN ON INVESTMENT, NOR A RETURN NECESSARY TO ATTRACT NEW INVESTMENT DOLLARS



**TEXAS POWER & LIGHT COMPANY**  
 A tax-paying, investor-owned electric utility



## Joe Hackney from Page 8

birds. Nearly every one of the many abandoned farm houses have a covey or two around them. These birds often have very little cover this time of year which makes them very easy to hunt. However, with the dust covering all of the grass and weeds, the hunting becomes quite uncomfortable. I still spent a couple of mornings there

hunting and managed to kill near limits each day.

From there, I went out west of Abilene to do some deer hunting and managed to fill out my tags. Hunting for deer there is quite different from what we have here. Almost all of it is done from large four wheel drive vehicles. Almost all of the shots are running shots and average

better than 200 yards. There were a lot of quail there including a large number of the blue quail. The blue quail is a larger bird than a bob white and runs more and faster. The blue quail run in a tantalizing formation just in front of you until you abandon your vehicle and chase them on foot. Then they resemble a late entry in

the Kentucky Derby. It seems sometimes almost impossible to get these birds up. Then on other days it's worse. I am at least glad that I have finally reached the point that I realize that I am not in shape to chase them on foot and settle for mostly bobs.

If you think that these birds are fast, then you

should see the wild turkey (the live kind). These birds combine the speed of the blue and the weariness of the whitetail deer to become one of the hardest birds there is to hunt. Though I saw several, I am happy to say that they are all alive and sell somewhere out on the ranch. I get a great deal of pleasure from just seeing the great

birds in the wild.

Meanwhile back here in Lufkin the white perch fishing continues to be the best bet for all of these anglers who pursue them during their schooling period. Once again they are found in the river and creek beds at levels from 12 to 20 feet. They are usually

**Cont on Pg. 19**

# Take a tax break.



## Act before February 14 and enjoy a tax break up to \$1,500.

A Lufkin Federal Individual Retirement Account (IRA) is for people not covered by a qualified pension or profit-sharing program. It lets you set aside a portion of your income with taxes deferred until withdrawn after retirement. You save tax dollars two ways with a retirement plan from Lufkin Federal. First, you can deposit 15% of your yearly income (up to \$1500) and claim your contribution as a deduction on your federal income tax. Second, you pay no taxes on the account, or the interest it earns, until you retire. By that time, you should be in a lower tax bracket. Now is the time to act! If you open your account before Feb. 14, 1978, you'll qualify for a 1040 deduction for the 1977 tax year. A Lufkin Federal IRA plan saves money, earns interest and is tax deductible. See Your Money Management Association for more details.

 **LUFKIN FEDERAL**

SAVINGS AND LOAN ASSOCIATION

Your Money Management Association

211 Shepherd Avenue — Lufkin — (713) 632-3306  
1532 11th Street/Brookhaven Shopping Center — Huntsville — (713) 295-6358  
501 N. Temple Drive — Diboll — (713) 829-4781

Member FSLIC





SPECIALS GOOD JANUARY 11TH  
THRU JANUARY 17TH

we accept food stamps

# HAROLD'S SUPERMARKET

732 S. TIMBERLAND DRIVE

FORMERLY DON'S THRIF-TEE FOODS

TIMBERLAND SHOPPING CENTER

MEMBER  
**AFFILIATED**

LAST WEEK'S GROCERY WINNERS	Sadie Lee Self Lufkin, Texas	Edith Hilton Huntington, Texas	Mrs. Joe Barnes Lufkin, Texas	Jesse Howell Diboll, Texas
-----------------------------------	---------------------------------	-----------------------------------	----------------------------------	-------------------------------

START COLLECTING  
YOUR SET OF  
BEAUTIFUL  
STONEWARE  
NOW!



## Bring Home the "Harvest"

Your choice of two stoneware patterns:  
Mountain Flower or Valley Fruits

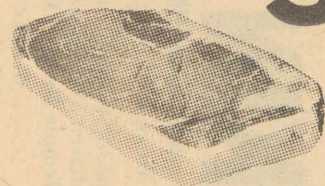
EACH WEEK A  
DIFFERENT  
COMPLETER  
PIECE WILL BE  
ON SPECIAL.

**\$200<sup>00</sup> in FREE GROCERIES**  
to be given away each week!

**4 - \$50 BASKETS**  
Drawing to be held each Wednesday - Register every time you visit our store - No purchase necessary - Need not be present to win.

COME BY AND GIVE US A TRY

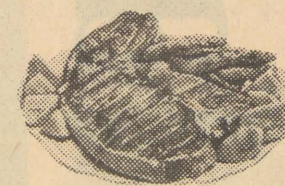
### Harold's Choice Baby Beef **SIRLOIN STEAKS**



Family Pack  
Lb. **\$1.09**

WE ARE HERE TO PLEASE YOU... THAT PLEASES US

### Harold's Choice Baby Beef **T-BONE STEAKS**



Family Pack  
Lb. **\$1.49**

### Fresh Lean Meaty Pork **SPARE RIBS**



Lb. **59¢**

START YOUR COLLECTION NOW!

Harvest Collection  
STONEWARE

This Week's Feature

Cereal Bowl only **69¢** each with \$3.00 grocery purchase

BONUS VALUE THIS WEEK

9" Vegetable Dish

**\$5.99**

SAVE \$1.00

No Purchase Necessary  
No Limit

OPEN SUNDAYS 9 TIL 6  
SPECIALS GOOD ALL WEEK!

THIS WEEK'S FEATURE

### Silver Spur Sliced Slab **BACON**



Lb. **99¢**

Mayland Club

## COFFEE

### HAROLD'S CHOICE TABLE TRIMMED MEATS

Harold's Choice Baby Beef  
ROUND STEAKS Family Pack  
Lb. **\$1.29**

Kreck's PARTY PUPS Lb. **59¢**

Banquet Frozen

## DINNERS





with \$10 or more purchase

1 Lb. Can

\$2<sup>39</sup>

RUMP ROAST

Lb. 99¢

TRIPE

Lb. 29¢

Harold's Choice Baby Beef  
PIKES PEAK ROAST

Lb. \$1<sup>19</sup>

Pork  
CHITTERLINGS

5 Lb. Bucket \$3<sup>49</sup>



except beer and nam

11 Oz.  
Pkg.

49¢

Betty Crocker

# HAMBURGER HELPER



Your Choice of Flavors

Box

59¢

## HAROLD'S SUPER SAVERS

Bama Smooth or Crunchy  
PEANUT BUTTER

18 Oz. Jar

99¢

Parkay Quarters

MARGARINE

Lb.

49¢

Bama STRAWBERRY PRESERVES

18 Oz. Jar

79¢

Pillsbury

BUSCUITS

7 Oz. Cans

99¢

Cremora Non Dairy  
CREAMER

Big 16 Oz. Jar

99¢

Clorox

BLEACH

1/2 Gal. Jug

59¢

Shurfine PORK & BEANS

4 16 Oz. Cans

99¢

Lysol Disinfectant

SPRAY

14 Oz. Can

\$1<sup>59</sup>

SPAM SPREAD

3 3 Oz. Cans

89¢

Purina DOG CHOW

Big 25 Lb. Bag

\$5<sup>29</sup>

Shurfine FLOUR

5 Lb. Bag

59¢

Miss Breck HAIR SPRAY

11 Oz. Can

89¢

Ore-Ida Frozen Crinkle Cut POTATOES

2 Lb. Bag

69¢

Dial Anti-Perspirant

DEODORANT

4 Oz. Can

\$1<sup>49</sup>



Wagner's Fruit

# DRINKS

Your Choice of Flavors

Big 32 Oz. Bottle

39¢

Betty Crocker

# CAKE MIXES



Your Choice of Flavors

18 Oz. Box

59¢

## GARDEN FRESH PRODUCE

US NO. 1 DRY YELLOW ONIONS

LB. 10¢

SUNKIST TANGERINES

4 LBS. 99¢

FRESH CRISP

BELL PEPPERS

LB. 39¢

Super Suds Laundry

# DETERGENT

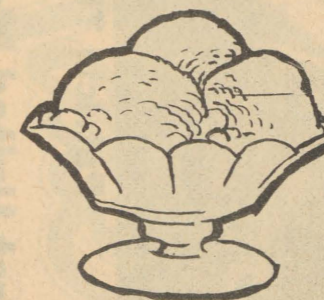


Giant Size Box

69¢

Cabell's Round Carton

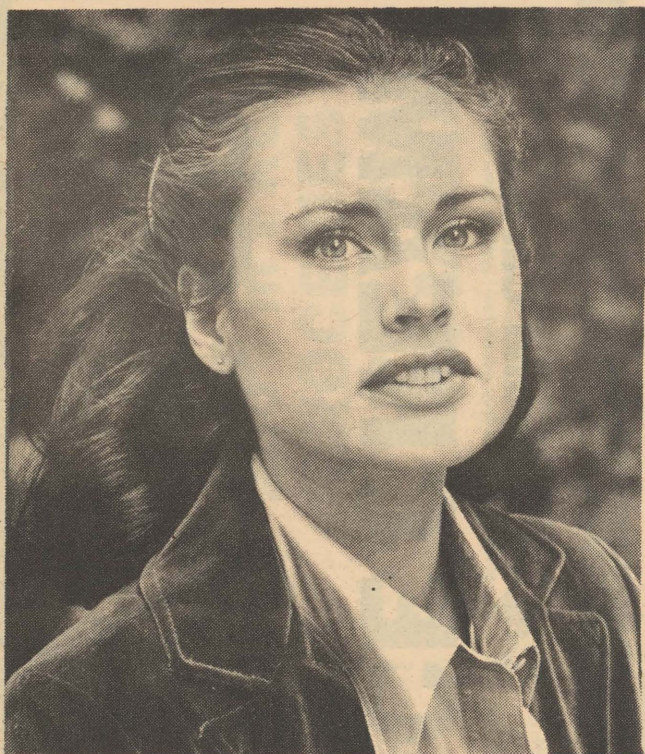
# ICE CREAM



1/2 Gal. Carton

99¢





**Patricia Thannisch**

**First United Methodist  
to feature guest soloist**

Mrs. Patricia Thannisch Roark, a native of Lufkin and the daughter of Dr. and Mrs. George Thannisch of Lufkin will be the special guest soloist at the First United Methodist Church of Lufkin on Sunday, Jan. 15, 1978. Mrs. Roark, an up-and-coming New York musician-actress-dancer will sing at the 10:30 a.m. worship service for the church and a special 4:00 p.m. Mini-Concert scheduled so as not to conflict with the Super Bowl. During the morning presentation, she will sing "God, My Shepherd, Walks Beside Me" better known as "Sheep May Safely Graze" by J.S. Bach. She will be accompanied by Mr. J. Marshall Maxwell, Organist-Choirmaster for the First Methodist Church on the church's 43 rank Casavant Pipe Organ. Instrumental parts will be provided on the flute by Lufkin's Brenda Richardson and Kathy Jones. During the afternoon program at 4:00 p.m., she will sing a variety of music. A nursery will be provided for both services.

Pat Thannisch established herself as a singer-dancer-actress when she was in Lufkin and when she attended Trinity University in San Antonio, Texas where she graduated Cum Laude. She has studied

with Lufkin's own Eunice Vickrey as well as other prominent vocal, acting, and dance coaches. She has attended the Seagle Music Colony in Schroon Lake, New York, a summer music camp familiar to many Lufkinites.

A young veteran of Broadway musicals and plays, Ms. Thannisch is well known on the East Coast as an opera singer. She has appeared in numerous plays, musicals, and operas and has toured with these productions. This has provided the opportunity for Ms. Thannisch to share her talents with many people. She was featured soloist in "US", an American Folk Oratorio presented at Lincoln Center in New York City. Ms. Thannisch is married to Sean Roark of New York City. Mr. Roark is an executive with a costume design company of New York which recently helped the Angelina College Community Theater is their production of "Man of LaMoncha."

It is with great pleasure that First Methodist Church presents Ms. Thannisch in this rare visit to Lufkin. Visitors are welcome at both the 10:30 a.m. and 4:00 p.m. services that will feature Mrs. Patricia Thannisch Roark.

**New Zion Baptist holds  
nightly prayer service**

The New Zion Baptist Church, located at 1202 Cain street in Lufkin, is holding a nightly prayer service this month as Reverend L.D. Bell declares January the "Month of Prayer." Reverend Bell said that they are praying

to revive the church and to go out and reach lost souls. New Zion Baptist Church is already conducting an evangelistic movement in the city of Lufkin. The nightly prayer meeting is open to everyone and begins at 6 p.m.

perry's
JANUARY

CLEARANCE

<p style="text-align: center;"><b>HOUSE PLANTS</b></p> <ul style="list-style-type: none"> <li>• 6" Pots</li> <li>• Ferns, Ivy</li> <li>• Many others</li> </ul> <p style="text-align: center; font-size: 2em;"><b>1<sup>99</sup></b></p>	<p style="text-align: center;"><b>ASSORTED PLASTIC WARES</b></p> <ul style="list-style-type: none"> <li>• Laundry Basket</li> <li>• Waste Basket</li> <li>• Pail</li> <li>• Large Tub</li> </ul> <p style="text-align: center;">YOUR CHOICE <b>93¢</b></p>
<p style="text-align: center;"><b>ASSORTED HOUSE PLANTS</b></p> <p style="text-align: center;">3" POTS Reg. 69¢</p> <ul style="list-style-type: none"> <li>• Prayer plant</li> <li>• Peperonia</li> <li>• Ivy</li> <li>• Hoya</li> </ul> <p style="text-align: center; font-size: 2em;"><b>2 for 1<sup>00</sup></b></p>	<p style="text-align: center;"><b>BIG THIRSTY WASH CLOTHS</b></p> <ul style="list-style-type: none"> <li>• Large selections of solid colors and patterns</li> </ul> <p style="text-align: center; font-size: 2em;"><b>43¢</b></p>
<p style="text-align: center;"><b>BED PILLOWS</b></p> <ul style="list-style-type: none"> <li>• Full Size</li> <li>• Asstd. patterns covers</li> <li>• Foam filled</li> </ul> <p style="text-align: center; font-size: 2em;"><b>2 FOR 3<sup>00</sup></b></p>	<p style="text-align: center;"><b>Canon Full Size BATH TOWELS</b></p> <ul style="list-style-type: none"> <li>• Large, absorbent</li> <li>• Solids - stripes - patterns</li> </ul> <p style="text-align: center;">Reg. 2.50 <b>1<sup>77</sup></b></p>
<p style="text-align: center;"><b>LARGE HOSPITAL PILLOWS</b></p> <p style="text-align: center;">Ideal for family use</p> <ul style="list-style-type: none"> <li>• Washable pure foam</li> <li>• Striped ticking</li> <li>• Mildew proof</li> </ul> <p style="text-align: center; font-size: 2em;"><b>2 FOR 6<sup>00</sup></b> Reg. 3.49</p>	<p style="text-align: center;"><b>LARGE HOUSE PLANTS</b></p> <ul style="list-style-type: none"> <li>• Many Varieties</li> <li>• 10" Pots</li> <li>• Rubber plants</li> </ul> <p style="text-align: center; font-size: 2em;"><b>8<sup>88</sup></b></p>
<p style="text-align: center;"><b>RUBBER PLANTS</b></p> <ul style="list-style-type: none"> <li>• 16"-24" Tall</li> <li>• Full foliage</li> </ul> <p style="text-align: center;">Reg. 7.95 <b>3<sup>88</sup></b></p>	<p style="text-align: center;"><b>PRESTONE II ANTI-FREEZE</b></p> <p style="text-align: center;">Winter-summer concentrate</p> <p style="text-align: center; font-size: 2em;"><b>3<sup>27</sup></b> Gal.</p>
<p style="text-align: center;"><b>NEW SHIPMENT! FLAT FOLD DRESS MAKER FABRIC</b></p> <p style="text-align: center;">Dacron Cotton</p> <ul style="list-style-type: none"> <li>• New Spring Patterns</li> </ul> <p style="text-align: center; font-size: 2em;"><b>99¢</b></p>	<p style="text-align: center;"><b>SAYELLE &amp; WINTUK YARN</b></p> <ul style="list-style-type: none"> <li>• 40 colors to choose from</li> <li>• 100% Acrylic</li> </ul> <p style="text-align: center; font-size: 2em;"><b>99¢</b> SKEIN</p>
<p style="text-align: center;"><b>LETTER FILE</b></p> <ul style="list-style-type: none"> <li>• Sturdy plastic</li> <li>• Dent and dust proof</li> <li>• Scratch-proof</li> <li>• For receipts, correspondence, bills, etc.</li> </ul> <p style="text-align: center; font-size: 2em;"><b>2<sup>99</sup></b></p>	<p style="text-align: center;"><b>LARGE ASSORTMENT PUZZLES</b></p> <ul style="list-style-type: none"> <li>• Adult &amp; Children</li> </ul> <p style="text-align: center; font-size: 2em;"><b>99¢</b></p>

perry's

• Angelina Mall • Chestnut Village • Downtown



# Stafford's

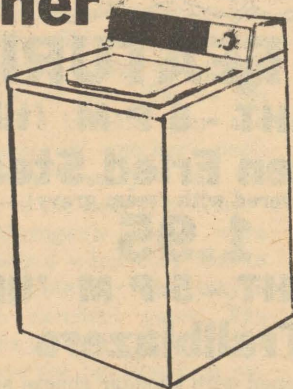
*Lufkin*

1404 N. Raguet

634-2268

the Word is Out!  
about  
Stafford's  
**GIGANTIC**  
January  
**Sale**

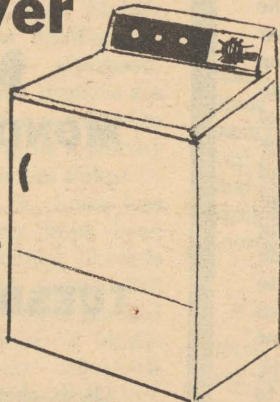
## Hotpoint Washer



WLW2330T

Washer offers Gentle Cycle for Permanent Press and Poly Knits, Normal Cycle for heavy, normal and light soil - 3 water level selections - 3 wash/rinse temperature selections - and 2 wash/spin speeds.

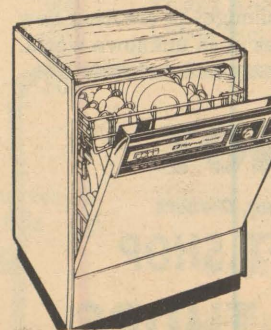
## Hotpoint Dryer



DLB2580P

Large capacity dryer with timed cycle up to 60 minutes of drying time - automatic Sensi-Dry Cycle - drying selections for Permanent Press and Poly Knits, normal heat, delicate heat and fluff. Removable up-front lint filter - Porcelain enamel top and drum.

## Hotpoint Dishwasher



HDA812

Offers 6 cycle options, Power scrub, normal with energy saver dry - short wash with energy saver Dry - rinse and hold plus many other extras.

**CUSTOMER CARE**  
... EVERYWHERE  
Hotpoint Fast, Dependable Service

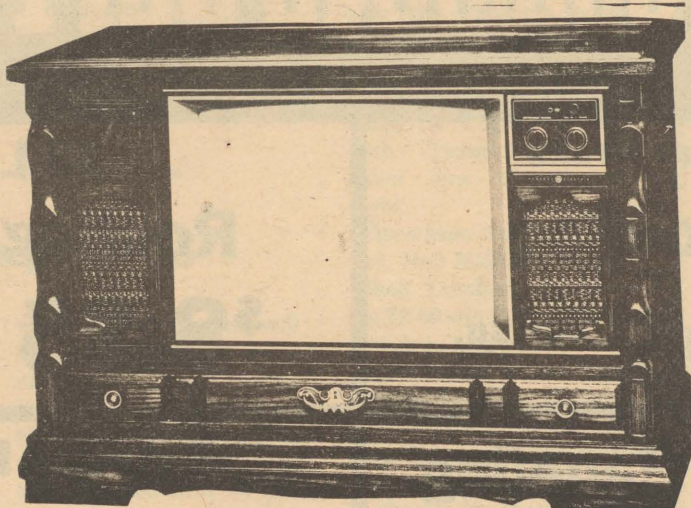


**Hotpoint**  
A QUALITY PRODUCT OF GENERAL ELECTRIC COMPANY

After 50 years of Innovation--

G.E. presents VIR Color

25" G.E. Console



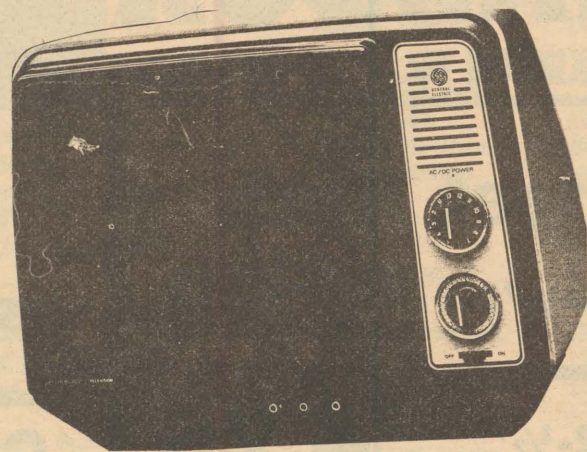
YM9445MD

VIR "Broadcast Controlled" Color

Reg. \$789<sup>00</sup>

Now \$759<sup>00</sup>

G.E. 12"  
Black & White TV



XB2461SL

The completely portable set. It operates on either AC house current or 12 volts external battery power. So you can enjoy it at home, car, motor home or camper.

Reg. \$129<sup>00</sup>

Now \$99<sup>95</sup>



## Book Review

by Emily Kistler & Judy Semlinger

"Coming Into the Country" by John McPhee is about Alaska and Alaskans--contemporary, for the most part, with occasional expeditions into Alaska's past. It is an unforgettable blending of vivid character sketches, observed landscapes, and descriptive narrative in three principal segments that deal, respectively, with a total wilderness, with urban Alaska and with life in the remoteness of "the bush."

Book I takes the reader on an adventuresome journey by canoe and kayak down a primal river in the western Brooks Range, at and beyond the northern tree line, among alpine tundra mountainsides where grizzlies graze. It is a world that has been used only by forest-Eskimo hunting parties. "This is

America's ultimate wilderness."

Book II describes, with not a little playful wit, the efforts of an officially appointed group of Alaskans (under the leadership of an Eskimo, who at age 27, was head of the Alaskan Democratic Party) to select a site for a new state capital.

Book III is focused on the region of the upper Yukon and brings together a memorable company of people, Indian and white--the latter a collection of trappers, goldminers, cat skinner, welfare recipients, practitioners of early retirement, burghers of tiny isolated towns, who at one time or another have abandoned the security and predictability of life in the "Lower 48" to confront the challenges of creating new lives in an unknown world.

Lynn Caine has become a source of inspiration, comfort, and courage to thousands of women across the country through her best-selling personal memoir, "Widow". She has lectured, taught, and answered thousands of letters -- daring to share with total honesty, her own experience with death and grief.

Now in "Lifelines", Lynn Caine addresses the woman -- alone or married -- who feels lonely and isolated. She a single parent, and the devastating effect which the success of her first book had on her life. With down to earth warmth and understanding she discusses the particular problems which women have dealing with loneliness: a loss of a sense of their own worth, depression, self-pity, the fear of success, and that "trapped" feeling. By giving examples from her own life she shows women how to take charge of their lives and offers guidance on how to manage money and business transactions, how to handle love affairs, how to discipline your children, how to develop trust in other women, and enrich your personal life.

A blend of personal testimony, realistic philosophy and practical advice, this is a book by a woman who has lived through the problems she describes and has learned, slowly and painfully how to overcome them.

## CAP offers scholarships to student members

Angelina County and surrounding area high school students who would like to attend college but cannot afford it should consider joining the Civil Air Patrol, according to Lt. Barbara Anderson, local CAP Commander.

"Civil Air Patrol, each year, offers approximately \$41,000 in renewable scholarships and grants," she said, "and they go to CAP members."

Some 60 members, most of whom will be cadets,

will be selected on a nationwide basis for the four-year scholarships and one-year grants, according to Anderson. Selections are made by a committee at CAP National Headquarters, Maxwell Air Force Base, Alabama. Choices are made on a point system based on academic records, school and CAP activities and leadership qualities.

CAP's academic scholarship and grant program is a continuing one which was begun in 1965. The mone-

tary value of scholarships and grants awarded since that time is now more than \$500,000.

Persons interested in joining Civil Air Patrol should attend a meeting any Tuesday from 7-9:30 p.m. at CAP Headquarters, located at Angelina County Airport, or call 632-6945 and leave a call back number or write P.O. Box 368 Lufkin, Tex. 75901. In Nacogdoches, phone 564-1270.

**The  
WHAT NOT**

Brenda and Delores Duren, Owners

**CERAMIC & GIFT SHOP**

**OPEN MON.-THURS.**

**8:30 'til 12**

MON., TUES., THURS. EVENING CLASSES  
5:30-8:30

**CALL 632-5474**

4th. House on Right Past City Limits  
On East Lufkin Ave.

EACH WEEK  EACH WEEK

**NOW FEATURING**

**MONDAY NIGHT - 5 P.M. 'til CLOSING**

**Chicken Fried Steak**  
(covered with cream gravy)

**1.95**

**TUESDAY NIGHT - 5 P.M. 'til CLOSING**

**Trailblazers**  
(1/2 lb. chopped steak topped with cheddar cheese and tomatoes or with cheddar cheese & mushroom gravy)

**1.95**

**WEDNESDAY NIGHT - 5 P.M. 'til CLOSING**

**Chopped Sirloin**  
(6 oz. bacon wrapped)

**1.95**

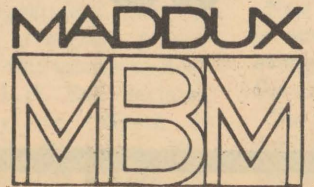
ABOVE SERVED WITH BAKED POTATO OR FRENCH FRIES. HOMEMADE BREAD AND SALAD OF YOUR OWN MAKING FROM OUR SALAD BAR.  
2109 So. First / Lufkin, Texas / (713)632-7000

# MADDUX

1603 ATKINSON DR. 634-6684

# LUMBER and BUILDING SUPPLIES

<p style="text-align: center;"><b>Sheet Rock</b></p> <p style="text-align: center;">4x8-1/2" <b>\$2.95</b></p> <hr style="width: 50%; margin: 0 auto;"/> <p style="text-align: center;">4x12-1/2" <b>\$4.25</b></p>	<p style="text-align: center;">Bear Brand <b>Roofing</b></p> <p style="text-align: center;"><b>\$17.95</b> per sq.</p>	<p style="text-align: center;">15 Lb. <b>Roofing Felt</b></p> <p style="text-align: center;"><b>\$8.25</b> per roll</p>
<p style="text-align: center;">New Warehouse Located On Atkinson Dr.</p> <p style="text-align: center;">Doug, Butch, and Bud Maddux</p>	<p style="text-align: center;"><b>Grade A Paneling</b> <b>In Stock Now!</b></p> <p style="text-align: center;"><b>\$4.50</b> UP</p>	<p style="text-align: center;">Exterior Door <b>Weather Stripping</b></p> <p style="text-align: center;"><b>\$3.49</b> set</p>



## MADDUX BUILDING SUPPLIES

1603 ATKINSON DR. LUFKIN 634-6684



# Dallas Cowboys established NFC champs, Super Bowl next

The Minnesota Vikings learned last Sunday that standing between Dallas and the Super Bowl was not the best place to be. Dallas methodically stripped the Vikes of all their weapons in the 23-6 whipping, and established themselves as NFC champs.

The Vikings were limited to 214 yards on 71 offensive plays and were running into Ed "Too Tall" Jones and Harvey Martin wherever they went. Only 66 of those yards came on

the ground, and Chuck Foreman gained only 59. When the dust cleared in Texas Stadium there were few who doubted the Cowboy's supremacy.

Roger Staubach was the key on offense where he completed 12 of 23 passes for 165 yards. On every third down play Staubach made the right move and kept the Cowboys rolling. Rushing honors went to Newhouse with 81 yards and Dorsett with 71. The two Dallas backs were into Viking secondary on al-

most every series and kept possession away from Minnesota.

Besides Jones and Martin's outstanding performances were turned in by Randy White, Charlie Waters, Cliff Harris, and Tom Henderson. This day it was Dallas' defense that put on a show and there were outstanding plays everywhere.

On the other side of the field Jan. 15 will be the Denver Broncos, beating the defending champ Raiders 20-17. It was a tenacious swarming Denver defense that won this one and Denver is no accident. The Raiders were shut off on offense and Ken Stabler had trouble finding his receivers all afternoon. The cinderella Broncos are very hungry going into the Bowl and will be a worthy opponent for the Pokes.

Since the St. Louis loss the Cowboys have been steadily climbing towards Super Bowl tempo and they seem to have reached it. The defense is totally dominant and Staubach has never been better. Denver will have a tough time with the Cowboy front four and Morton will find his former teammates less than hospitable. This may be the best matchup in recent years.

## Panthers

### from page 8

Panthers went on for the win.

Tyler was forced into numerous turnovers by the Panther defense, who controlled the tempo of the game. Under both the offensive and defensive boards the Panthers maintained their composure right to the end. It was a sweet victory and it set the stage for a good contest with Texarkana. That game was played last night.

Elsewhere over the weekend, Neil McGilvra led the Diboll Lumberjacks to a big 72-60 win over Central. McGilvra also pulled down seven rebounds as Diboll outbounded the Bulldogs 37-30. Diboll raised the record over the .500 mark and are improving rapidly as the season progresses.

The Hudson Hornets got a balanced scoring effort in their 66-44 win over the Woodville Eagles. Ricky Hefner got top honors with 15 points, while Jerry Arnold added 14, Scott Smith with 12, Joey Parker with 8, and Keith Allen, David Reynolds, Gary Stephenson and Doug Jones all added four. Hudson ran their season slate to 11-6 with the win, the next on their schedule is Hunting-

## My Corner from page 8

finish to the national title chase in years.

Notre Dame held Earl Campbell to a respectable 116 yards while forcing seven turnovers in their convincing win. The previously unbeaten long-horns could never really get their potent offense rolling, while Irish Quarterback Joe Montana was busy capitalizing on Texas' mistakes. Six miscues ended up as Notre Dame scores and Texas was beaten. The Irish defense, led by the bookends Willie Fry and Ross Browner, proved more than a match for the Horns. Try as he might, Earl found defenders where he formerly found holes. Notre Dame's only loss came at the hands of unheard Mississippi. Meanwhile Texas defended their number one ranking six times before falling and still maintains a claim to the crown.

Penn State was beaten only by rugged Kentucky and their big win over WAC champion Arizona State moves them to a position for the title. The Nittony Lions played good ball all year and their 11-1 record matches that of the other contenders. Then of course we have Alabama, and their demolishing of

Ohio State deserves recognition. The always prolific Woody Hayes found the SEC as formidable as the Pac 8 in bowl play and garnered another post-season loss, you can believe the Bear is pleased.

Michigan's hopes were dashed when they lost to Washington, who played an excellent game. The jinx that the PAC eight has over the Big Ten lives on. So when the season ended last Monday night what was left was a very unclear picture. Quite a few people have made note that they own the crown and many have convincing arguments.

Since there will be so many different views of the national picture you will be able to pick your own champ, we've done just that. This year's picture became very muddy with Texas losing but here's what the rest of the bowl's brought forth.

1. Notre Dame
2. Texas
3. Alabama
4. Arkansas
5. Oklahoma
6. Michigan
7. Penn St.
8. Pittsburgh
9. U.S.C.
10. Washington.

## Hackney from page 13

schooled up in big schools that cover a number of depths which you can catch them from.

Toledo Bend is still the best bet as far as the white perch are concerned. During the extremely cold spell we had last week, the white perch moved deeper for a day or so but quickly moved back into their pattern.

Toledo Bend will be the sight for American Anglers first tourney of the year. Already there have been a lot of the pros in the area trying to find a few fish before the tournament. One of the things that they look for this time of year are the concentrations of fish in the deeper

water. Often these fish will be good sized and in good number. Talking about just that, there was a stringer of 11 fish weighed in on Toledo this past week that weighed over 77 pounds. Before you run for your calculator let me save you the trouble, that's over seven pounds a fish average. That stringer alone would win most all three-day tournaments. Its things like that that keep people like me out there in the rain, wind or what have you patiently waiting for my time to come.

I have just returned to the area from the holidays and hope to have more on the lakes next week. Until the, good luck. JEH

## Recreation and Parks basketball

### Men's A League

Team	W	L	PCT.
T.F. Raiders	4	0	1.000
Blue Chippers	3	0	1.000
Boot's Furn.	2	1	.667
La. Pacific	1	2	.334
Temple Fiberboard	0	2	.000
Bobby's Elec.	0	2	.000
Little Italy	0	3	.000

### Results

Blue Chippers	vs.	Little Italy	Forfeit	
T.F. Raiders	54	vs.	Boot's Furn.	47

### Schedule Jan. 9

Little Italy	vs.	Bobby's Elec.	6:00
Blue Chippers	vs.	Temple Fiberboard	7:10

### Jan. 12

Little Italy	vs.	La. Pacific	8:20
Blue Chippers	vs.	Boot's Furn.	9:30

### B League East

Team	W	L	PCT.
State School	3	0	1.000
Bert Gann	2	1	.667
Whites	2	1	.667
Sabine Invest.	1	1	.500
Jazz	1	2	.334
Slow Rollers	1	3	.250
Wells	0	2	.000

### Results

Slow Rollers	49	vs.	Bert Gann	43
Whites	42	vs.	Jazz	32

### Schedule Jan. 10

Whites	vs.	Wells	8:20
Jazz	vs.	Sabine Invest.	9:30

### Jan. 12

Whites	vs.	State School	6:00
Jazz	vs.	Bert Gann	7:10

### Men's B West

Team	W	L	PCT.
Dixon	3	0	1.000
Danny's	2	0	1.000
Am. Auto Sal.	2	1	.666
Shanklee Concrete	1	2	.333
Sambo's	0	2	.000
Courthouse Clic	0	3	.000

### Results

Dixon	69	vs.	Shanklee Concrete	51
Am. Auto. Sal.	66	vs.	Courthouse Clic	42

### Schedule Jan. 9

Danny's	vs.	Sambo's	8:20
Dixon	vs.	Am. Auto. Sal.	9:30

### Jan. 10

Danny's	vs.	Shanklee Concrete	6:00
Sambo's	vs.	Courthouse Clic	7:10

### Women's League

Team	W	L	PCT.
Central	2	0	1.000
Bestco	1	1	.500
Eastex Audio	0	2	.000
Lufkin Workshop	0	2	.000

### Results

Central	26	vs.	Bestco	24
---------	----	-----	--------	----

### Schedule Jan. 12

Eastex Audio	vs.	
Central	vs.	

### Jan. 10

Bestco	7:00
Lufkin Workshop	8:20

## Lufkin Youth Bowling results

Pee Wee	
High Game	
Brandy Canida	72
Debra Tullis	66

High Series	
Brandy Canida	136
Debra Tullis	130

Saturday Super Stars	
Girls High Game	
Angie Ferguson	101
Pam Holland	97
Karen Evans	97

Girls High Series	
Angie Ferguson	265
Pam Holland	251
Karen Evans	251

Saturday Super Stars	
Boys High Game	
Van Gay	145
Kevin Elstrom	131
Galen Richard	121

Boys High Series	
Van Gay	349
Kevin Elstrom	334
Galen Richard	312

Nova	
Girls High Game	
Lori Cox	129
Pattie Strisko	129
Julia Buckanon	117

Girls High Series	
Pattie Strisko	355
Lori Cox	339
Julia Buchanon	323
Boys High Game	
Jerry Sitze	151
Steven Matzebacher	150
Robert Strisko	143

Boys High Series	
Jerry Stize	426
Steven Matchenbacher	406
Robert Strisko	357

Shooting Stars	
Girls High Game	
Tonya Massengill	122
Karen Gay	119
Kathie Conner	117

Girls High Series	
Tonya Massengill	358
Kathie Conner	308
Karen Gay	282

Boys High Game	
Dwayne Telford	191
Danny Nettles	189
Lonnie McIntire	176

Boys High Series	
Dwayne Telford	550
Jim Vest	472
Danny Nettles	463





# Lufkin Area Church News

## Arlington Pastor to address Full Gospel Fellowship

Saturday, Jan. 14, at the Holiday Inn in Lufkin, James E. Hester, Pastor of the Arlington Christian Center, will be the guest speaker at the monthly Full Gospel Business Men's Fellowship.

James E. Hester, graduated from Hardin-Simmons University and Southwestern Baptist Theological Seminary. He studied at the University of

Perugia, Italy and International Institute of Milano, Italy. He was Pastor of Southern Baptist Churches for 14 years prior to going to the foreign mission field. He served under regular appointment by the Foreign Mission Board of the Southern Baptist Convention to the countries of Italy and Libya, North Africa. Jim Hester was the Coordinator of Crusade Evangelism for the Baptist

Convention of Texas for five years and is currently Pastor of Arlington Christian Center in Arlington, Tex., where he resides with his wife, Jo Ann, and daughters.

He pastors the Arlington Christian Center, which is one of the fastest growing churches in the Dallas-Fort Worth Metroplex area. He travels all over the world preaching the fullness of the Holy Spirit. He recent-

ly returned from Hawaii, where he and his wife preached and ministered. He is on the faculty for the Full Gospel Business Men's Fellowship International and travels extensively for them.

Buffet begins at 7 p.m. at the Holiday Inn with fellowship at 8 p.m. The whole family is invited, according to Billy Jackson, Lufkin F.G.B.F.I. President.

## Assembly of God to receive new members Jan. 15

First Assembly of God Church, located at 1711 South John Redditt Drive, and their Pastor, Bob Lewis, is making ready for a full month of activities as new members will be received into the church Sunday morning, Jan. 15.

If you would like to become a member of the First Assembly of God Church in Lufkin, you are asked to go by the church and fill out an application and present it to Pastor Lewis. Then on Sunday night, Jan. 15, First Assembly of God will have a water baptismal service. You are asked to contact the Pastor on this matter also.

Doctor Habib Iskander, an Egyptian medical doc-

tor who is now a missionary to Amman, Jordan, will be special guest at the Assembly on Jan. 22. On Jan. 26, the the Singing Deweys will be guest of the Church.

The First Assembly of God Church of Lufkin, at 1711 South John Redditt Drive, begin their Sunday mornings with Sunday school at 9:45 a.m. and morning worship services at 10:45. Sunday night at 6 p.m., the young group called "Christ's Ambassadors" meet before the evening services at 7 p.m. Services on Wednesday night begin at 7 p.m. Bob Lewis is the Pastor. Ron Schomerus is Minister of Music and Youth.

## St Cyprian's School accepting enrollment applications through January

Saint Cyprian's School, adjoining to the Saint Cyprian's Episcopal Church at 919 South John Redditt Drive, is now in the process of accepting enrollment applications through the month of January.

Illeene Cornick, Principle at Saint Cyprian's School, said this past week that the school is open to all children from kindergarten all the way up to sixth grade. The school currently houses 160 students, whereas they are able to handle approximately 202.

Mrs. Cormick mentioned that the children need not be members of the Saint Cyprian's Church to apply for enrollment, but they do require screening of the

parents and their children before making a decision to enroll them in the classes.

Saint Cyprians offers a number of regular academic courses, along with art courses, music training, physical education, and others in which they have employed specialized teachers. One of the newest additions to the school is a lunch program in which the students can purchase their lunch on the school grounds. Illeene said that the lunch program has proven to be very effective as well as a convenience.

She also stated that the school program is so unique in its teaching that two children from Woodville and one child from Jasper are transported daily by their parents to attend the classes in Lufkin. Another program out of the ordinary involves a student council in which the pupils learn leadership at an early stage. Illeene commented that the council is made up of only students, with an adult supervisor.

The fee for enrolling children in Saint Cyprian's School is as follows: Kin-

dergarten, \$46 a month; first through third grades, \$57 a month and fourth through sixth grade, \$70 a month.

Enrollment is taken between the hours of 8 a.m. and 3 p.m. Monday through Friday at the school office facing John Redditt Drive. The children also attend chapel each school morning from 9 a.m. until 9:30 a.m. For more information, phone Saint Cyprian's School office at 632-1720.

## Area churches participate in 'East Texas on Stage '78'

A number of area churches participated in the newly organized "East Texas On Stage-78", which was sponsored by the Angelina County Unit of the American Cancer Society. The event took place January 7 in the Lufkin High School Auditorium. The production consisted of a variety of talent coming from local civic clubs along with other individual and group performers.

Among the local churches that took part in the event were the First Baptist Church of Lufkin and the Puppet Ministry of Gabriels Gang. There are at least 15 church members who are a part of the puppet ministry with two separate groups from the young and elderly.

A mixed quartet from the First United Methodist Church of Lufkin presented the song "One Tin Soldier" under the direction of Marshall Maxwell, Minis-

ter of Youth and Music. Also Youth Minister Glen Sanders of First Baptist Church of Lufkin, presented a group of college students who sang at the production. The students are on the most part,

members of Baylor and Stephen F. Austin University.

Another area group that participated in the "East Texas On Stage-78" was the Lufkin Interdenominational Choir.

## Day of recollection conducted for diocese

The Reverend Tony Pondant, of Christ the King Church in Dallas, conducted a special day of Recollection for Catholic Women of the Diocese of Beaumont under sponsorship of Sacred Heart Church Ladies Guild at that church.

The event was held Tuesday, Jan. 20, at 504 North Street in Nacogdoches. The day included a series of conferences, group discussions, meditations and consultations.

A Benediction of the

Blessed Sacrament sung in Latin concluded the event which last until 2:30 that afternoon.

Pat Harris was the coordinator for the retreat day.

### Art Classes Now Forming At **MEDFORD'S ARTS & CRAFTS**

Chestnut Village II 634-6830

**WAX & PLAY SCULPTURE—Jan. 18, Day or Night—Connie Thompson-instructor**

**TOLE PAINTING—Jan. 23, Day or Night—Kathy West-instructor**

**WATER COLOR PAINTING—Jan. 24, Day or Night—Audrey Medford-instructor**

**OIL PAINTING—Jan. 26, Day or Night—Audrey Medford, -instructor**

Class Sizes Limited Enroll Now

**Attend the church of your choice this Sunday**



# RSVP members involved in numerous projects

The holiday spirit of giving, helping, and togetherness was present during the month of December as Lufkin and Diboll members of the Retired Senior Volunteer Program involved themselves in numerous community projects.

The first RSVP sponsored event was the Diboll Fair Acres Craft Bazaar which was held on Dec. 9 and 10 and featured a variety of handcrafted articles as well as homemade baked goods. Thirty per cent of the Diboll RSVP Groups'

net profits are presented biannually to the Children's Hospital Service League. Profits from the bazaar will enable the volunteer to make a contribution of approximately \$130 to the League in January.

On Dec. 13, the Lufkin RSVP Core group held a luncheon Christmas luncheon-dessert party at the Lufkin Nutrition Site in the Keltys Senior Citizens Center. The RSVP Tune Chasers Quartet, with the help of Mrs. Elizabeth West and James

Law, led the group as Christmas carols were sung. Highlight of the luncheon was the drawing for the hand-made double wedding ring quilt by RSVP President, Barbary Hutson. Winner was Mrs. Clyde Thompson of Diboll.

December 16 was a busy day for the RSVP volunteers as the Diboll Swingers Rhythm Band performed on the KTRE Hi Noon Show, while that afternoon Lufkin volunteers gathered in the RSVP office at the Senior Citizens Center to help pack and decorate Christmas baskets to be delivered to elderly shut-ins under the direction of Department of Human Resources Caseworkers Barbara Smith and Ruth Martin. The Lufkin RSVP group had previously contributed toward the purchase price of fresh fruit to fill the baskets, and several RSVP volunteers also helped make home visits necessary in delivering the baskets. Another Lufkin RSVP volunteer, Mrs. Ethel Wise, spearheaded a fund raising drive at the Senior Citizens Center to benefit an elderly Lufkin resident whose household repair savings had been stolen from her home. Lufkin volunteers were involved throughout December, wrapping Christmas gifts for the State School using Christmas paper donated by Perry Brothers.

Cont. this page

## Gourmet Corner

by Audrey Davenport



Careful shopping does much to assure that the foods you buy are at the peak of their goodness and wholesomeness. Once you bring them home, keeping them wholesome is up to you. Storing them properly and using them in time means that, when served, they will be safe to eat and at the peak of their flavor, texture, and nutritional value. Three types of bacteria cause most cases of food poisoning: Salmonella, Staphylococcus, and Streptococcus. While present at all times, they do not normally cause trouble until certain conditions cause them to multiply rapidly, to dangerous levels. To prevent bacterial growth and consequent danger of food poisoning you should: work with well scrubbed hands, utensils, dishes, and work surfaces. Cook or serve food as soon as possible after removing it from storage, and refrigerate food immediately after the meal is over. Fresh fruits and vegetables must be washed before using, even though they are to be cooked; they may be infected by chemical sprays. From 34 degrees F. to 40 degrees F. is the temperature for your refrigerator storage. Use foods quickly. Don't depend on maximum storage time. It's often not possible to tell by taste or smell whether food has become contaminated. Following are some tempting casserole dishes.

- 1 tsp. salt
- 1/2 tsp. pepper
- 2 tsp. sugar
- 1 (15oz.) can tomato sauce
- 4 oz. Noodles (uncooked)
- 4 green onions (finely chopped)
- 1 (8 oz.) pkg. cream cheese
- 1 cup dairy sour cream
- 1/2 cup grated cheddar cheese

Cook & stir ground meat in skillet until lightly browned - add mushrooms, garlic, salt, pepper, sugar & tomatoe sauce. Cover & simmer 15 min. Cook noodles and drain. Combine onions, using some of the green tops with cream cheese and sour cream. Mix well. Spread one-fourth of noodles in a 2 Qt. casserole dish, top with one fourth ground meat mixture. Spread one-fourth cream cheese mixture over top. Repeat until all ingredients are used. Sprinkle with grated cheese. Bake in 350 degrees oven, until bubbling hot in center. Good!!

- Dirty Rice  
1 med. green pepper

- chopped
  - 1 med. onion chopped
  - 2 Tablespoons butter
  - 2 tsp. Thyme
  - 1/2 tsp. salt
  - 1/4 tsp. pepper
  - 2 cups cooked rice
  - 1/2 cup cut-up. Cooked bacon, ham or any meat.
- Cook pepper & meat in butter, until clear, but not browned. Combine with rest of ingredients in 1 1/2 qt. casserole. Bake at 325 degrees for 45 min.

Fur traders during early frontier days ate wild rice in quite different dress than some of wild rice recipes, and "found it did very well as a substitute" for regular rice. It was eaten then with "bears' grease and sugar."



## RSVP from this page

On Dec. 22, Diboll members gathered at Fair Acres Community Center for a gift exchange and awarding of a hand made baby quilt made by members to Mrs. Ervillia Jordan, who in turn presented it to RSVP President Estelle Sunderland to give to her four month old grandson. Highlight of the day on Dec. 22 was a Christmas brunch hosted by Diboll Swingers Rhythm Band Director Rosemary Sweet-

land at her home in Diboll for all Rhythm Band members.

Senior Citizens active in the RSVP program report this holiday season to have been the busiest and best ever. The Retired Senior Volunteer Program is sponsored in Angelina, Shelby and Nacogdoches counties by the Deep East Texas Council of Governments. Offices are located at the Senior Citizens Center at 504 Henderson in Keltys. Any retiree over the age of 60 is urged to contact the RSVP staff at 632-4601 if they are interested in participating in the RSVP program.

## Providence Baptist sets revival

Providence Baptist Church has scheduled a "layman's revival" for Jan. 13, 14 and 15. The revival will feature local speakers.

Speaker for Friday night will be Richard Whitten. Saturday night, Sherman Jones will speak. Sunday morning services will feature Jackie Jumper and the Sunday evening service will feature Robert Meadows.

The revival will begin 7 p.m. Friday and Saturday nights and at 10:45 a.m. and 7 p.m. Sunday. Music will be led by John Jones. Providence Baptist Church is located on Hwy. 94 West in Hudson.

## Public Notice

Texas Power & Light Company, in accordance with provisions of the Public Utility Regulatory Act of Texas, hereby gives notice of the Company's intent to implement new schedules of electric service rates in areas served by the Company, effective January 25, 1978, or as soon thereafter as permitted by law.

The rate schedules will result in an 18.4 per cent increase in the gross revenues of Texas Power & Light Company.

A complete copy of the new rate schedules is on file with the Public Utility Commission at Austin, Texas, and with each affected municipality, and is available for inspection in each of the Company's public business offices.



TEXAS POWER & LIGHT COMPANY  
A tax-paying, investor-owned electric utility

Sugar Plum Tree Sugar Plum Tree

Sale - Sale - Sale

**EVERY DEPARTMENT**  
**Uniforms - Maternity**  
**Boys - Girls - Infants**  
**All Sizes 4 - 5 - 6**  
**MARKED DOWN**

**JEANS Complete Stock \$4.00**

Spring Stock coming in Daily

Save on all Fall and Winter Wear

Sugar Plum Tree  
1001 Ellis - Lufkin, Texas  
OPEN 8:00 A.M. - 5:30 P.M.  
Phone 634-6778

Sugar Plum Tree Sugar Plum Tree

 Sun-n-Pines  
Family Restaurant

**SUPER SPECIALS SERVED ALL DAY!**

ALL THE PANCAKES YOU CAN EAT!	<b>59¢</b>
TWO EGGS, GRITS OR HASH BROWNS, TOAST OR BISCUITS	<b>97¢</b>
CHICKEN FRIED STEAK, SALAD AND POTATOES	<b>\$1.95</b>

**SPECIALS GOOD MON.-FRI.**



# THE LUFKIN HOME BANNER CLASSIFIED ADS

Automobiles      Automobiles      Automobiles      Automobiles      Automobiles      Automobiles

**For Sale:** 1970 MG Midget, new tires, wire wheels. \$1195.00. 639-2782.  
**For Sale:** '73 Pontiac Catalina, good condition, clean. \$1295. 829-5001.  
**For Sale:** '71 Volkswagon Beetle. Clean, good condition, \$895. Call 875-2451.

**For Sale:** 1969 Plymouth Fury III. In good condition. Will trade for pick up. 632-6844.  
**For Sale:** '72 Mercury Monterey. '65 V.W. Super Beetle. '69 GMC 1/2 ton pickup, 302 automatic engine. Call 2-2812.

**For Sale:** '76 Thunderbird, 1 owner. Low mileage. Loaded. Must Sell. 634-2253. After 6 call 875-2957.  
**For Sale:** '71 Toyota Corona II, must sell, reasonable. Call 9-1215 before 5:00, 9-2800 after 6:00.

**For Sale:** '68 Corvette Stingray. 327, 4-speed, low mileage, new tires and battery, real clean. \$3,600. Phone 634-2992 after 5.

**For Sale:** '71 Ford Galaxie 500 - ac, power steering, power brakes. Call Robbie 2-2679 nights, 8-5, 4-4494.

**For Sale:** '75 LTD, auto., air-cond., low mileage. \$3395. 853-2328.

**For Sale:** 1975 Regency 98, loaded. For more information, call 632-2274.

**For Sale:** 28 X 8 Trailer Van. Good for storage, on wheels. 632-2328.

**For Sale:** F2 Mercury Montego Station Wagon, A/C, good tires. \$1350.00 876-5257 after 6.

**For Sale:** 1976 Scout Traveler - power steering & power brakes, ac, luggage rack, towing package, low mileage. Call 632-3960 after 5:00.

**For Sale:** Dodge Walk-in Camper Van, new green paint, fresh rebuilt on 6 cyl., automatic. 829-3293, evenings.

**For Sale:** '68 Corvette, 327, 4-speed, 50,000 miles, new tires, \$3,600. Call 634-2992 after 5.

**Must Sell:** '76 Luv Truck, step side bed, air condition, Mikado interior, mag wheels. Call 4-3383 before 5 or 9-2987 after 5. Ask for Brad.

**For Sale:** '74 Cadillac Coupe de Ville, leather upholstery, fully loaded, low mileage, excell. condition. Must see it. Make offer. 634-7565 or 632-5293.

**For Sale:** '71 Buick Riviera, power windows, brakes, stirring, and seats. Tilt wheel and cruise control, trailer hitch, good clean condition. \$1500. Phone 634-2131 after 3:30.

**For Sale:** '72 Ford 4-wheel drive pickup. AM-FM 8 track tape player. \$1,500. 632-6500.

**For Sale:** 1975 Gran Torino, white/blue top. Like new, 25,000 miles. \$2,995. Phone 634-9723 before 9:30 a.m. and after 5:30 p.m.

**For Sale:** 1974 Corvette Convertible, 454 eng., PS, PB, T & T wheel, AM-FM 8 track tape, power windows, new tires & spoke wheels. \$5550. Call 569-8103 after 5 p.m.

**For Sale:** '73 Pontiac Catalina w/mag wheel, clean, fair tires. '72 Pontiac Ventura, good tires, clean \$600. Phone 829-5001.

**For Sale:** '70 Model Ford pickup, 302 engine, air, heat & radio. 632-3936.

**For Sale:** '69 Chev. 1/2 Ton pickup, \$250. '72 Monte Carlo, \$250. Monte Carlo needs repairs. Phone after 5:00 p.m. 634-9683.

**For Sale:** Dodge DeFon 340, auto transmission, headers, traction bars, dual ignition, mag wheels on the rear. Phone 824-2019.

**For Sale:** '75 Firebird Spirit. Tilt wheel, AM radio, 8 track tape player. After 5, 824-2388 or 632-1671.

**Reduced to Sale:** 1974 Cheyenne Blazer, 2 wheel drive, fully loaded, \$3,150. 634-2975.

**For Sale:** 1975 Honda CVCC Ac. Four speed, good economy car for student. \$1995. 632-6326.

**For Sale:** '73 El Camino, silver/burgandy, vinyl top; PS, PB, AC, AM-FM Tape Player. Call 824-2131.

**For Sale:** '76 Buick Regal, completed loaded, show room condition. Call for Mark for more information at 634-7773 or after 6, 632-6826.

**For Sale:** 1976 VW Campmobile with AM-FM Stereo Radio, pop top; sleeps 4, sink, icebox, table. \$5500.00 632-2281, after 4 p.m.

**For Sale:** '74 Chevy El Camino Classic, good tires, good condition. Best offer. 639-1712.

**For Sale:** 1971 El Camino, black and white, auto., power & air. Looks good. \$1695. Call 632-7868.

**For Sale:** Clean 1971 Pontiac Catalina, 2 Dr., Brougham, steel belted radial tires. \$1295 632-1608.

**For Sale:** 1970 2 dr. Hornet. AC., one owner, dependable, economical transportation, good condition. See at 1008 Cunningham.

**For Sale:** Excellent '71 Chrysler New Yorker, \$1095. After 6 p.m. Call 824-2940.

**For Sale:** 1977 SJ Gran Prix, low miles, loaded with accessories. Take up notes. 634-2829 after 5.

**For Sale:** '76 Granada, automatic, power and air. \$3700. Call 2-4411 ext. 188 or 2-5845 after 5.

**For Sale:** 1978 CJ-7 Renegade Jeep, Levi seats, V-8, Loaded, \$6850.00 Firm. 3,500 miles. Phone 632-6897.

**For Sale by Owner:** 2 Br. frame with one acre land. Call 2-7218.

**For Sale:** 1976 Pontiac Lemans - 4 Dr. automatic Power steering, excellent mechanical and physical condition - \$3600 - 632-5764 or 634-338.

**For Sale:** 1973 Cutlass Supreme Coupe, A/C, PS/PB, Auto., V-8. Call Jeff, 2-5506 after 6, 2-4920.

**For Sale:** 1971 Volvo, 142S, air condition, radials, low mileage, 25 mpg, clean. \$1350. Phone 829-5984.

**For Sale:** 1973 Gran Torino, vinyl top, 351 2 barrel, automatic, power steering & power brakes, good condition. Phone 829-5016.

**For Sale:** '73 Maverick - 6 cylinder, A/C, auto., good condition, 22 mpg. 634-4380 after 5 p.m.

**For Sale:** 1974 Pont. Ventura, 2 dr. hdt. std. R/H, 6 cylinder. Good on gas. \$1500. Call 634-7783. Ask for Hank at Ivy St., Huntington.

**Collector's Item** - 1941 Chevrolet pickup. Runs, excellent cond. 829-5888.

**For Sale:** 1973 Thunderbird, low mileage, extra clean, loaded. Phone 632-4119.

**For Sale:** Overhead, long base, camper, good condition. \$325.00. Call 632-5613.

**CAR-TOWN**

★ We Finance  
★ No Interest  
★ Easy Credit

**425 Atkinson Dr.  
634-9600**



**HURRY ON  
DOWN FOR  
BIG AUTO  
Savings!**

New Hours 8:30 - 5:30  
Sat. 8:00 - 4:00

- 1971 BUICK SKYLARK  
4-Dr. Good Family Car.  
ONLY **\$1288**
- 1971 FORD LTD  
2-Dr., Hard Top.  
ONLY **\$1445**
- 1969 FORD MUSTANG  
302-V-8, Auto/Air,  
Economy Plus  
ONLY **\$1488**
- 1970 CHEV. BELAIR  
4-Dr., Good Work Car.  
ONLY **\$895**
- 1969 OLDS. 98  
2-Dr. Hard Top. Good  
Transportation.  
ONLY **\$695**
- 1962 CHEV. IMPALA  
4-Dr. Hard Top. This is  
an oldy but goody.  
ONLY **\$788**
- 1955 CHEV.  
210, 4-Dr., 6 cylinder,  
standard. Can be  
restored easily.  
ONLY **\$995**



**FENDERSIDE PICKUPS**

For that sporty look and easy side loading and cargo handling, the Fenderside Pickups feature side steps located between the rear fender and cab back. Smooth pickup box sidewalls facilitate even loading. Two- and 4-wheel drive models are available in either 6 1/2- or 8-foot box.

**Parts • Sales • Service**

**GIBBS GMC**

**TRUCKS**

**912 N. Timberland**

**LUFKIN 634-7793**


# Garden

## SPEEDEX

### PLANTING TIME!

THE NO NONSENSE FARM & GARDEN TRACTOR

American Built Since 1935



ALL FOR \$2640.<sup>00</sup>

**Rear Mount Grader Blade**  
48" Wide x 13" high heavy duty blade  
Adjustable tilt angle  
5 Position angle adjustment  
Reversible  
Can be offset right or left

**Belly Mower**  
44" Cutting width, side discharge  
1" to 4" Cutting height  
Twin blades, 22"  
Right angle, tandem gear box, drive

**Dump Cart - 10 Cu. Ft.**  
Body - 30" x 48" x 12"  
1000 Lb. Capacity  
16" x 4.30 - 8 Pneumatic tires, bearings and grease fittings  
Weight - 110 Lbs.

INTERNATIONAL TRUCKS

E-Tex INTERNATIONAL

•Parts •Service •Sales  
1623 S. First 634-8181

**MNC INC.**

300 EAST DENMAN  
639-1221 & 639-1222



# THE LUFKIN HOME BANNER CLASSIFIED ADS

**Automobiles**

**Automobiles**

**Automobiles**

**Automobiles**

**Automobiles**

**Automobiles**

**For Sale:** Monte Carlo "Firemist Red". Velour & leather matching interior. Low mileage. Loaded - air power, tape, 40 channel C.B., air shocks, custom trailer hitch. Will help financing. \$2877 or best offer. Call Jim at 632-4749. 4

**For Sale:** 1973 Chevy Impala, great condition, 4 new tires with power & AC. \$1,695. Call Chris 634-7773. 4

**For Sale:** 1965 Mustang, \$725. Call 875-2109. 1

**For Sale:** 1949 Chev. Truck, 1 1/2 ton, with Grain Body in mint condition. \$795. Call 632-4733 or 2-4644.

**For Sale:** '66 Chev. pickup, V-8, stand. shift. Mercury Tiller. Caller 853-2405 after 5.

**For Sale:** 1977 Econoline 150 Ford Van, 5100 miles, 300 6-cyl., custom paint, captain's chairs, mag wheels, AM-FM 8 track, air cond., power steering, power brakes, auto., pay equity & assume notes. 2-4182.

**1976 Chevy** custom pickup. Air, power steering, AM-FM radio, power brakes, auto. \$4,050. Phone evenings. 632-3221 or days 639-2241.

**For Sale:** '74 GMC Truck, 350, 1/2 ton automatic, power steering & brakes, A/C. \$2700. Call 632-6468 after 6 p.m.

**For Sale:** '72 Capri, priced to sell. Crager wheels, new tires. See at Little Italy 1-5 daily or Call 824-2727 ask for Ted.

**For Sale:** '76 Thunderbird, 1 owner. Low mileage. Loaded. Must Sell. 634-2253 after 6 call 875-2957.

**For Sale:** 1973 Ford Pinto Squire Station Wagon - 27,000 Miles. Factory tape player, 2 new tires. Call 875-3948 or 875-2458. \$1995.

**For Sale:** 1977 Chevy Scottsdale 1/2 ton - 4-wheel drive truck. Short wide bed - wide tires, loaded. 824-2089.

**For Sale:** '76 VW Rabbit, 4-dr., air cond. \$2800. 639-2549. 1

**For Sale:** '68 Mercury Monterrey, black & white. Good work car. \$395. Call 632-5577 8-5, 867-4469 after 5:30.

**For Sale:** Chevy Van, 307 cu. in. engine. Stand shift. \$2,000. Phone 875-2726.

**For Sale:** 1976 Datsun Pickup. Good condition & low mileage. \$3495. Call 632-1636 after 5 p.m.

**For Sale:** 1975 MG Midget, excellent condition. white with black top. Luggage rack, \$2,795. Call 639-2869 after 5. 2

**For Sale:** 1970 Dodge Dart Swinger, Slant 6 Engine. Automatic, A/C, very good tires, extra clean. Phone 2-1147 after 5:30, all day on weekends. 2

**For Sale:** 1973 3/4 ton Chevrolet Pickup truck. Green, PB, PS, AT, LWB, \$1,450. Call 632-5466. 2

**For Sale:** 1976 Grand Prix SJ, 19,000 miles, fully loaded, one owner, excellent condition. \$4,975. 632-2326. 2

**For Sale:** 1977 Monza, red with plaid interior, auto. and AC. Still in Warranty. 829-4866. 2

**For Sale:** 1977 "Dooly" 1 ton Silverado. Low mileage, excellent condition, loaded, blue/silver. Call 4-7594, 9-5 or 4-9660 after 5 p.m. 2

**For Sale:** 193 '98 Oldsmobile, very good condition, contact John Green, 632-2757 or 82-1350. 2

**For Sale:** '68 Chevrolet Impala, 4-door sedan, 327-V-8 Engine, \$450. Phone 853-2620. 1

**For Sale:** 1977 Datsun King Cab Pickup, 5 speed, loaded, \$4,500; VW with 65 HP engine, Baja kit, \$895; 1976 Goldwing, sharpest in East Texas, \$4,500; Camper for short narrow bed. Phone 632-7823. 1

**For Sale:** '69 Chevrolet station wagon, 49,000 miles, used as a church bus, good shape. 824-2320 or 824-2205.

**For Sale:** 1975 Ford Custom Pickup, power brakes, power steering, auto. transmission, V-8 Engine, Priced right. See at 1614 S. Chestnut 2

**For Sale:** 1973 LeMans Sports Coupe, 28,000 miles, AC, PS, PB, Excellent condition, \$2150. 632-3055. 2

**For Sale:** '77 Dodge Van, 3/4 ton, automatic, air condition, cruise control and more. Cargo area unfinished, low mileage, in excellent condition. Priced to sell. Phone 2-5293. 1

**For Sale:** 1977 Chev. Scottsdale 1/2 ton pickup with 4-wheel drive, loaded, wide tires & wheels, excellent condition. 824-2089.

**For Sale:** 1972 V-8 Chevrolet P.U. 1/2 ton with camper cover. Good condition. 867-4139 before 10:00 a.m. or after 7:00 p.m.

**For Sale:** 1969 Ford Ranger Pickup, cheap. Call 632-7120 or 639-2641. 2

**For Sale:** '75 Dodge pickup, 3/4 ton, 4-speed. Loaded. Must sell. Stan., 634-2253, after 6, 639-1957.

## WHO?

Gives a 12,000 Mile or 12 Mo. Warranty on the Motor, Transmission, and Rear End On a Used Car or Truck?



## "WE DO"

Why? Because each one of our Top Quality Cars and Trucks are Certified and Inspected for our Customer's Protection.

**12,000 Miles or 12 months warranty on approved Used Cars**

# HIGHTOWER

Auto Sales

101 -A South Timberland Lufkin, Texas 75901 632-7178

THANK YOU,

# Gibbs GMC Trucks

We appreciate your business.

## MACK...where fuel economy is standard, not an option.

Fuel economy in a Mack starts exactly where you'd expect it to, in the engine. Standard! Mack diesel engines have delivered up to 12% better fuel economy than comparably rated competitive engines under similar conditions. That could mean a saving of \$1500 every 100,000 miles. With other manufacturers, the options may include such items as radial tires and airshields. Mack offers options, too, but we start with a fuel-stingy engine. Interested in increasing your profits? Sure! Give us a call. We'll be glad to stop over to explain built-in fuel economy. We have a Fuel-Caster chart on which we can compare fuel performance of a Mack with your present trucks.



"Built Like a Mack Truck"™ - it's part of the language



# BARRETT MACK

## Sales & Service

Loop 287 639-2371

# PRICE CUT

## LONG TRACTORS



For a limited time, we are offering selected models of LONG Tractors at unheard-of low prices. You get more horsepower and more weight per dollar than any other tractor we know of. LONG offers six tractor models from 35 to 120 H.P. Four wheel drive is also available.


**Stop By Today For A Deal You Won't Believe.**



**East Texas Tractor**  
Sales & Services  
Fm 58 632-4733

# THE Bank

YOU



# FBT

FIRST BANK & TRUST  
LUFKIN TEXAS/MEMBER F.D.I.C.  
Member Republic of Texas Corporation

**REPOSSESSIONS**

- 1973 Mercury Capri
- 1974 Ford 1/2 Ton PU Explorer (Individual)
- 1976 Cacco Craft 15 ft. Fiberglass Boat - 70 HP Evinrude Mtr. & Trailer
- 1977 Cougar XR-7 (Individual) (on our lot)
- 1974 Pontiac Ventura
- 1973 Chrysler Ski Boat, Dillyl Trailer & 1972 Chrysler Motor 130 HP
- 1974 Pontiac Catalina
- 1973 Grand Prix - Low-Mileage (Individual)

CALL 632-5511  
FIRST BANK & TRUST



# THE LUFKIN HOME BANNER CLASSIFIED ADS

**Automobiles    Automobiles    Automobiles    Automobiles    Real Estate    Real Estate**

**For Sale:** 1948 Willis Jeep, rebuilt, excellent condition. Call 632-3826 after 5.    1

**For Sale:** 1975 Datsun 2802 2 + 2. Loaded, low mileage. Call 2-5293.

**For Sale:** '71 El Camino, ex. clean, power and air. \$1895. 2-7868 after 5.

**For Sale:** '68 Impala Chev. 4 door, 327 V-8 engine, good condition. Call 853-2620.

**For Sale:** '67 International Metro van. 10' aluminum body, V-8 engine. Call 829-5752 after 5 p.m.    2

**For Sale:** '71 VW in fair cond. \$500. Call after, 639-2088. 421 Laurel, space 17.

**For Sale:** 1976 Transam 400. Silver with red pin stripes, AM-FM Tape, Haney comb. wheels, new tires. After 4, phone 632-1500 or 634-7270.    2

**For Sale:** 1969 Buick, all power, new tires. \$600. 829-4103.    2

**The O'Quinn Baptist Church** are now taking sealed bids on a 1969 Chev. Carry-All. The vehicle may be seen at the O'Quinn Baptist Church on Hwy. 69, eight miles north of Lufkin. For more information or for an appointment to drive Carry-All, call 853-2643 between hours 8:00 A.M. and 12:00 Noon Monday through Friday. The Church reserves the right to reject all bids. Bids must be in by Feb. 4, 1978. Mail all bids to: O'Quinn Baptist Church, Rt. 1, Box 154 C, Pollok, Tex. 75969.    2

**For Sale:** 1972 Bonneville Pontiac, 2 door hardtop, V-8, AC, Radio & heater, buckskin w/saddle brown interior, 47,000 miles, excellent cond. \$1495. Call 829-4103.    2

**For Sale:** '73 Chevrolet Pickup, 350 Engine, all power, air condition. \$1995. Call 632-4705 after 5.    2

**For Sale:** 1972 Toyota Corina. Runs good, good tires & motor. \$650. Call 875-3636 after 5:30 P.M.    2

**Trailwood Circle** - Contemporary 3 BR, 2 Bath, brick CH/CA, built-ins, fireplace, lots of closet space, garden area, fenced back yard, by owner, 634-2530 after 5:30 p.m.

**SANDRA Poulang**  
REAL ESTATE

**508 BURKE  
DIBOLL  
829-4040  
MLS**

**FORD**  
REAL ESTATE  
**632-7204**

1022 E. Denman Ave.

MEMBER MULTIPLE LISTING  
Veta M. Rowin    634-9675  
Clayton Jones    632-1581  
Pauline Cullen    634-5027  
Joan Little    634-3027

*Thank you*

# Lufkin Realty

*We appreciate your business.*

## Professional REALTY, INC.

617 N. Timberland Dr  
PHONE 634-6681

**ANGELINA COUNTY**

**707 Acres** - Highway 7 frontage, 2 frame dwellings, 2 barns, beautiful lake, pastures, fenced and cross-fenced.

**19.55 Acres** - In Huntington area, completely fenced, utilities, road frontage, \$1,000 per acre.

**100 Acres** - Beautiful pine timber with black top running thru property, just off 103 W.

**37.8 Acres** - Off 103 E., wooded, creek, could be divided, \$825 per acre.

**13.7, 19.096 acre and 7.8 acre tracts** - On 103 E at intersection of FM RD 1669 south. Utilities to property, will sell separately or all in 3 acre tracts.

**51 Acres** - Close in just off 103 E with frontage on 2 county roads, \$1250 per acre.

**129 Acres** - Just off 59 N. on FM RD 843, 3 BR. home, barn, ponds, fenced, \$850 per acre.

**52 Acres** - Adjoining Angelina College, wooded, ideal for country estate or subdividing.

**875 Acres** - On Angelina River with Hwy. 7 frontage, 6 cabins, hunting and fishing paradise. Only \$425 per acre with owner financing available.

**50 Acres** - North of Lufkin with FM RD frontage, wooded, \$1,000 per acre.

**SAN AUGUSTINE COUNTY**

**17 Acres** - On Hwy 96 with beautiful wooded building site.

**HOUSTON COUNTY**

**80 Acre Estate** - Just off loop in Crockett with 4000 sq. ft. brick home, 10 acre lake, barn, tractor & equipment, costal bermuda pastures, beautiful setting. Would make excellent subdivision or country estate.

**696 Acres** - Excellent for hunting with 300 acres pastures, 400 ac. wooded, \$575 per acre.

**244 Acres** - Beautiful improved pastures cross-fenced into 11 pastures, utilities, ponds, farm road frontage, \$800 per acre - just see to appreciate.

**4500 Acres** - Grapeland area, highly improved pastures, Trinity River frontage, \$600 per ac.

**TRINITY COUNTY**

**120 Acres** - On FM RD 357 between Applesprings and Centralia, creek, wooded, \$690 per acre, owner financing available.

**79 Acres** - Centralia area, fenced, woods and pasture, \$550 per acre.

**56 Acres** - On FM RD 357 - wooded, creek, \$690 per acre.

**NACOGDOCHES COUNTY**

**88 Acres** - Beautiful wooded land, fence-1, Cushing area, \$495 per acre.

**POLK COUNTY**

**119 Acres** - With two houses, barns, ponds, fenced, pastures, Hwy. 287 - \$1,000 per acre.

**277 Acres** - Off 59 South of Corrigan. Fenced, cross-fenced, two lakes, pastures, \$650 per acre with owner financing.

**78 Acres** - On hwy 287 between Corrigan & Groveton, lots of frontage, fenced - \$900 per acre.

**CHEROKEE COUNTY**

**37 plus Acres** - Frontage on Hwy. 69 just south of Risk with beautiful rolling hills, \$650 per ac.

**COMMERCIAL**

**Loop Property** - 1 acre

**Washateria** - Hwy. 69, Excellent Terms

**Timberland Drive** - 8800 Sq. Ft.

**Shopping Center** - 15,200 Sq. Ft.

**Commercial Building** - N. 1st. - 1800 Sq. Ft.

**RESIDENTIAL**

**3 BR, 1 B** - Brick home on approx. 1/2 acre, located in the Herty School Dist. Completely fenced. Only \$26,000. Better call today for appointment.

**EXCLUSIVE** - Like a little room? 1.26 acres with 3 bed., 2 bath home, only 2 years old. 1639 Sq. Ft. Beautiful carpet. Located in Wells.

**4 Bed.** - Brick Veneer home on 80 acres, with 10 acre lake, Crockett

**3 Bed., 1 Bath** - frame home located in Lufkin School Dist. PRICE REDUCED from \$13,500 to \$11,000. Now's your change!

**Huntington** - Beautiful brick home only 3 years old, has had excellent care. All built ins. Attractive arrangement and priced at only \$34,000.

**Double Wide** - Mobile Home Only 1 year old. Beautiful 1/2 acre wooded lot, located in Hudson School Dist. 1440 Sq. Ft., 3 Bed., 2 Bath, Formal Dining Area. 10' x 10' Utility shed, gas range, dishwasher, and refrigerator. Would have to see to appreciate. Only \$28,500.

**2 Bed., 1 Bath** - home located in Huntington. Nice appearance, and priced to sell at \$26,900.

**Like the larger rooms?** Thought it was impossible to find? Well, this lovely home has it all - 3 bed, 2 large baths, 1925 sq. ft. Built in China Cabinet in kitchen, lots and lots of storage. Concrete drive to top it off. Priced right at \$48,500.

**2.76 Acres** - with 3 Bed., 1 Bath brick home located in Huntington. Large Building for storage. Lovely corner lot. Close to schools and shopping.

Geraldine Bradford- 876-5155  
Don Reily- 632-4140  
Jeanie Padgett- 639-2769

Farrel Padgett- 639-2769  
Mike Phillips- 876-5155

**Savings Time**  **Closeout**

## ON ALL 1977 LTD'S

### 'DRASTIC REDUCTIONS'



**Stock No. 1155**  
**Blue, 4-Door, AM-FM, All Electric, Cruise Control & Tilt Wheel.**



**1977 LTD Landau**  
**SAVE AS MUCH AS \$1600.00**

**GREATER LUFKIN FORD**



**FORD**

**811 S. Timberland**  
**632-6611    Lufkin**

JANUARY  
**The Savings Month**  
AT OUR LOT!

**76 Hornet Station Wagon, 6 cylinder, auto., air. \$3295.00**

**74 Pinto Runabout - low mileage \$1995.00**

**72 VW Station Wagon - auto., air, low-mileage \$1495.00**

**75 Ventura - 6 cylinder, auto., air, gas saver \$2995.00**

**74 Plymouth Duster - V-8, standard with air \$2295.00**

**75 LTD Station Wagon, loaded. \$2995.00**

**HASKINS MOTOR CO.**  
1001 S. Timberland  
632-1955



# THE LUFKIN HOME BANNER CLASSIFIED ADS

Real Estate Real Estate Real Estate Real Estate Real Estate Real Estate

**For Sale:** Lake Lot at Shirley Creek Estate. Completely set-up for Mobile Home. Call 632-6268 after 5:00.

**For Sale:** 1 acre of land in Rocky Hill. 632-2793.

**Kiln Street,** 3 BR frame, carpet, CH/A, fenced backyard. Call Terry's Realty, 632-1706. 1

**2 Ac.** inside city w/3 or 4 BR older frame home w/fireplace. Call Terry's Realty, 632-1706. 1

**Energy Efficient Home:** Lovely 3 BR 2 B, brick CH/A, FP, heated swimming pool, Trout School. Call Kay Holleman, 634-9172. 1

**Peaceful Country Living** - You must see these 2 beautiful brick homes with fireplaces, CH&A, carpet. Each setting on 1 1/2 acre. Call Kay Holleman, 634-9172. 1

**OFF THE BUSY STREETS** - very nice neighborhood, 3 BR, 1 1/2 B, Brick, fenced back yard, mid 30's Call Paul Williams Realtor. 632-6644. 1

**For Sale:** Two cemetery lots in San Jacinto Memorial Park. Houston. 829-4627.

**For Sale:** 38 acres 5 miles from Loop. Call 632-5675.

**For Sale:** 3 Br. 2 B. Brick, Double garage. New carpet throughout. 2000 sq. ft. living area. 4-4864.

**For Sale:** One lot with septic tank and 200 ft. field lines, water, gas and electricity on lot. One 1968 Mustang, both in No. 1 condition. 824-2419.

**For Sale:** 3 lots in Garden of Memories, in the Crepe Myrtle Division. 2-1950.

**For Sale:** 2 Bdrm. house & guest house - 17 acres - 6 stall garage - all fenced - beautiful lake - barns. Call 876-5561.

**For Sale:** Large old house, suitable for salvage material. \$1,000 or best offer. Call 4-8356.

**Janie Chappell**  
REALTOR  
632-2222  
804 S. TIMBERLAND



**JANIE CHAPPELL**  
MEMBER MULTIPLE LISTING SERVICE  
OPEN ALL DAY SATURDAY

**811 S. First...** 3 BR, 1 B, Frame, \$19,900.  
**IMMEDIATE OCCUPANCY...** 3 BR, 1 1/2 B, Brick, built-ins, CH/A. \$30,900.

**Outstanding Buy!!!** Charming 1 1/2 B, like new condition. Gold appliances & carpet. Cul-de-sac. Must see!

**Holly Acres** - 1 1/2 Story treated pine club house. Great for entertaining. Owner finance.

**1620 Sayers** - 8 3/4 Acres. 6 room frame & garage apt.

**Week-End-hideaway!!!** 3 Room frame completely furnished. FM 1669. \$6,500.

**Owner Finance!!** 40 Acres! Beautiful bldg. site. Improved pasture. Apple Springs area.

**103 East** - 5 1/2 Acres. Mobile home hook-up. Barn. 218 ft. on hwy.

**3/4 Acres** - Shaded with mobile home hook-up. 8 x 16 bldg. 12 x 16 bldg. Utilities.

**Beautiful Homesite!!!** 20 Acres! Oil top & country road frontage. Pollok area.

**Commercial** - 5 Acres with 500 ft. frontage on Hwy. 59 S. All utilities.

**Acres** - 5 to 13 Acre tracts. Beautiful hardwood trees. FM road.

**2310 Northwood** - 3 BR, 1 1/2 B. built-ins, workshop, greenhouse, chain link fence. Ready for occupancy.

**Homewood Acres** - Beautiful new brick on 1 acre. Custom fireplace, 4 bedrooms, 3 baths. Abundant storage, double garage. Lufkin Schools. **Young at Heart!!!** Brand spankin' new, 3 BR, 2 Baths, Built-ins and lush carpet, \$32,800.

**1505 Wildbriar** - Better than new cond. Tastefully decorated. 4 BR, 3 B, 2 story brick, huge den, fireplace, formal areas, fenced yard.

**5 Acres Off FM 1475** - 3 BR Frame, large metal barn, pond, 12 x 14 storage.

**FM 2021** - Solidly built brick home. 3 BR 2 B. Unusually large family room, fireplace, beamed ceilings, sun filled kitchen, on 1 1/3 acres. Lufkin School Dist.

**Loads of Glass!!!** One-of-a-kind home! Custom 3 BR 2 B Brick. WBFP TV. Room. Formal dining. Much more! Call for details! Brookhollow.

**Budget Wise!!!** 614 Atkins frame on 1 acre. \$17,500.

**Owner Transferred!!!** 3 BR 1 B. Brick trim. CH & CA. Extra neat! Trout School.

**OFF 69 NORTH** Brick 3 bedroom home with large workshop on 1 acre. Very neat and clean. Only \$34,900.

**Abney** - Nice corner lot. Excellent buy!

**Kirksey Real Estate**  
**C. L. Kirksey - Broker**

Do your listing with us

**Edna Machann**

P.O. Box 153 -  
Zavalla Texas 77651

**897-4512**

**DONOVAN REAL ESTATE**  
**639-2211**

2126 S. First Hwy 59 S

OPEN SATURDAYS

**IDLEWOOD** - 1 1/2 story brick, 4 BR, 2 B, 3/4 acre lot.

**428 MONTROSE** - Well kept 4 BR, 3 B frame on 2 lots. Frontage on 3 sides.

**417 HOSKINS** - Quality construction in this lovely older home with new kitchen & plush carpet. 2 BR, 1 B, 2 lots. \$31,500.

**HUDSON** - Spacious 5-room brick, fenced, stove & refrigerator. \$37,500.

**DIBOLL** - Neat & clean, 3 BR, 1 1/2 B, privacy fence, patio. Extra nice storage bldg. \$27,500.

**DIBOLL** - Commercial potential, 59 S. 2 BR, 1 B, \$20,000.

**WELLS** - 3.3 acres, nice 4 BR, 2 B, Brick, 2 storage bldgs. \$45,000.

**708 BOOKER** - 1.8 acres and 3,000 sq. ft. brick home with many great features! Call today!

**FM 2916** - 1 acre & 2 BR, 1 B frame home newly remodeled. Lufkin Schools. \$20,900.

**HUNTINGTON** - Neat 2 or 3 BR, 1 B frame on 2.2 acres. CH&A, electric range. Extra room for business or hobby. \$33,900.

ACREAGE

**6 ACRES** - New 3 BR, 2 B frame. Bald Hill area.

**100 PLUS ACRES** - Lufkin Schools, \$590/acre.

**NEAR COLLEGE** - 100 acres - \$990/acre.

**POLK CO.** - 123.8 acres - \$460/acre.

**CUSHING** - 135.8 acres - \$560/acre.

**DIBOLL** - 16.5 acres, pecan trees.

**141 ACRES** - \$700/acre.

**CENTRAL** - 19 acre tracts.

COMMERCIAL

**1-3/4 ACRES** - frontage on Raguet & RR. Zoned LM, 6-room brick.

**25 ACRES** - Loop 287 & Lake.

**LOTS**  
**100'x100'** - Redland  
**3 LOTS** - Morgan's Cove.  
**PRETTY BLDG. SITE** - \$5,600, Diboll  
**FOREST HILLS** - 3 beautiful lots.

MEMBER MULTIPLE LISTING

**VIRGINIA WELCH**, 824-2834  
**PRICE ALLEM**, 634-3839  
**BONNIE DONOVAN**, 829-5854  
**DICK DONOVAN**, 829-5854

**Vernel HAVARD**  
REALTOR  
634-8336  
1105. s. Timberland

MEMBER MULTIPLE LISTING

Evenings 634-8338

**LaRue Real Estate**  
639-2523

1907 Kurth Dr.

Member Multiple Listing

**HUDSON** - Six room frame house with nice efficiency apartment. Nice, corner lot. Good location.

**JOYCE LaRUE**, 875-2998

**HOME REALTY**

417 S. Chestnut  
639-2241  
DAY OR NIGHT

Member Multiple Listing

**WILLOW BEND:** Brand new and a fireplace waiting for you. Elegant decor and designed for the young family. Let us show you today!

**520 LAUREL:** 3 BR, 2 B. New central H & A and low, low 30's. Carpet, siding and a place for your own business.

**20 TANGLEWOOD:** 3/2 and ready for you. All the extras in this 2,000 sq. ft. home in Trout School.

**JAMES:** We have a 4 BR, 2 B home, fenced yard and fresh paint if you wish. \$26,000.

**JAMES:** New 2 BR, 1 B Home under Construction and only 18,000.

**IDYWOOD:** We have 2 Brand New Homes, one 1600 sq. ft. and one 1800 sq. ft., with fireplace and all added features. 3/4 acre lots and priced for the working family. Central School.

**1315 EDGEWOOD:** Brand new 3/2 with fireplace ready for you and priced 42,950. Energy efficient and fully carpeted. Central.

**WANT A 2 BR 1 B FRAME HOME:** On 1 acre that is zoned commercial? Want a price you can live with? We have it!

**JUST LISTED:** 2500 Sq. ft. 4 BR, 2 1/2 B, 2 central units, 2-story brick with all extras in thermal windows. Call us today to see this one in Fairview, Kurth School.

**103 W.:** 5 BR, 2 B, 3,000 plus house on 38 acres. Priced Reduced!

**30 ACRES:** 103 W. \$2,000 per acre.

**10 ACRES:** Off 58, \$12,000.

**480 SQ. FT. BUILDING:** To be moved. Priced right and has everything for a small business.

**Lora Urban** 632-3221  
**Jean Wicker** 639-1766  
**Linda Huggins Martin** 632-4102  
**David Sharp** 824-2409

THERE IS NO PLACE LIKE HOME

**Pat Foley & COMPANY**

1105 S. TIMBERLAND  
634-5586

Jackie Kopycinski - 634-9574  
Rita Morrison - 875-2542

632-4861  
**Peggy Boone** MLS  
Realtor  
876-4108

EVENINGS 876-5416

WE HAVE THE LISTINGS YOU ARE LOOKING FOR TODAY!!!

**ROGER BROCK**  
REALTOR

634-5566  
811 Locke, Lufkin

**Like New:** 3 BR, 2 B, Brick with fireplace, built-ins, inside utility. \$38,500.

**Idlewood:** 3 & 4 BR homes, under construction, finished to your specifications.

**LOTS**  
125 x 200 - \$4,150.

**ROGER BROCK** - 632-6549  
**DIANA JOHNSON** - 639-1653

**Terry's Realty Co.**

Lufkin, Texas 75901  
713-632-1706

**2 Ac.** inside city w/3 or 4 BR. Older frame home w/fireplace.

**Kiln St.** - 3 BR frame. Carpet CH/A fenced backyard.

**Neil Terry**  
Res. 632-5196

REALTOR

**TRAVIS CARRINGTON REALTY AND ASSOCIATES**

MLS

634-4118

409 E. Denman

634-4990

Lufkin, Texas 75901 Tx.

avis Carrington - Realtor

632-1015

**Lufkin Realty**

**REAL ESTATE CORNER**

Ray-Broker

Residence 824-2111

Corner Chestnut & Lee

REAL ESTATE VS DOW JONES

When we compare the results over the past decade between stock market profits and real estate increases, we'll see quite a dramatic difference in dollars.

In the decade from January 1960, to January 1970, the Dow Jones Industrial average jumped from 688 to 800 - an increase of 16 per cent in ten years. During the same ten-year period, the average home price increased from \$18,307 to \$27,022 - an appreciation of 48 per cent or triple the Dow.

By January, 1977, the Dow Jones average jumped to the 1,000 level for a 16-year appreciation of 45 per cent while home prices continued to increase faster than the cost of living to \$46,000 - up 150 per cent since 1960.

No matter how you slice the cake, an investment in real estate over the past decade had proven to more than double the stock market increase. And the trend is widening in favor of real estate.

If there is anything we can do to help you in the field of real estate, please phone or drop in at LUFKIN REALTY, 1001 Lee, Lufkin. Phone: 639-2227. We're here to help.

Waynetta Moseley - 632-7230  
Robert Ray - 634-2829

Martha Barrington - 634-5220  
Member Multiple Listing

2-2222

9-2281

Rausilyn Conn - 4-9781  
Roy Chappell - 4-3724

Guy Barrett - 634-3632  
Betty Haney - 634-9441

"PUTTING YOU FIRST KEEPS US FIRST"



# THE LUFKIN HOME BANNER CLASSIFIED ADS

Real Estate

Real Estate

Real Estate

Real Estate

Real Estate

Real Estate

**For Sale:** 5 Room house, 2 br., 1 b., all carpeted, on lot 100x125. Chain length fence around the lot. 810 storage house. Call 632-7498 or 853-2921.

**Shirley Creek Estates:** lot no. 46 \$2,600. Call 632-4263.

**Want to Buy:** 2-5 acres on west side of Lufkin. 634-4816 or 634-5821.

**Corrigan - Just Opened - "MORE REAL ESTATE"** corner of Hwy. 59 and 287, 398-2555. 2

**3 BR, 1 B** Brick home on approx. 1/2 acre, located in the Herty School Dist. Completely fenced. Only \$26,000. Call Professional Realty. 634-6681. 2

**Exclusive** - Like a little room? 1.26 acres with 3 BR, 2 B home, only 2 years old. 1639 sq. ft. beautiful carpet. Located in Wells. Call Professional Realty. 634-6681. 2

**Private Living** on 2 1/2 acres, lovely 3 BR, 2 B, CH/A, Fireplace. Must see to appreciate. Kay Holleman Realty, 4-9172. 2

**Brand New & Beautiful.....** 3 BR, 2 B, Brick, CH/A, Fireplace. Private dining area. Kurth School. Kay Holleman Realty. 4-9172. 2

**Idlewood.....** 1 1/2 story brick, 4 BR, 2 B, 3/4 acre lot. Donovan Realty, 9-2211. 2

**708 Booker.....** 1.8 acres and 3,000 sq. ft. brick home with many great features! Call today! Donovan Realty. 9-2211. 2

**For Sale:** Shop building 35 x 72 on 1 acre. 4.9 acres, scrap iron. Corner of Elm and 6th, Huntington. 2

**1407 Oakhill.....** Functional & beautiful 3 BR, 2 B, Brick on 3/4 acre. Master Suite, His 'n Her Dressing Rooms. Lots of Glass, but private. Elegant extras. Call 2-2222, Janie Chappell Realtor. 2

**For Sale By Owner:** 1306 sq. ft. plus, carport and utility room. Fenced yard. Walk to trout school. 3 BR, 1 1/2 B, 3 1/2 years old. \$33,000. Call 639-2567. 2

**Idlywood:** We have 2 Brand New Homes, one 1600 sq. ft. and one 1800 sq. ft. with fireplace and all added features. 3/4 acre lots and priced for the working family. Central School. Home Realty. 639-2241. 2

**For Sale:** 2 beautiful wooded lots located near Toledo Bend Lake. Asking price, \$4,500 each lot. Call 691-6019 in Houston. 2

**Bargain.....** Brick, 4 BR home, large fenced lot, gas, CH/A...\$32,500. Norma Medford Realty, 2-2766. 2

**Most Attractive.....** New home, brick, fireplace, blt-ins, Trout School. Norma Medford Realty, 2-2766. 2

**Like New.....** 3 BR, 2 B, Brick with fireplace, built-ins, inside utility. \$38,500. Call Roger Brock Realty, 4-5566. 2

**Idlewood....** 3 & 4 BR homes, under construction, finished to your specifications. Call Roger Brock Realty. 4-5566. 2

**Inwood Terrace....** Willow Bend has just the perfect house for the young couple. 3 BR & 2 B, Fireplace, Carpet and Built-ins. Walk to Kurth School. Home Realty, 9-2241. 2

**3 BR Brick.....** On 2 ac., WBFP, 2 miles from lake. Arthur Bresie Realty, 634-8306. 2

**New On The Market....** 415 Trailwood Circle, 3 BR, 2 B, contemporary - decorators delight. Arthur Bresie Realty, 634-8306. 2

**We want to buy** 2-4 acre of cleared pasture land. Phone after 4:00, 632-7194. 1

**For Sale:** 2 1/2 acres plus this 3 BR home, storage house in back, priced at appraised value. Call 632-2766. Norma Medford Realtor. 1

**Crosstimmers - Idlywood** offers this spacious Brand New home just ready for your furniture. Fireplace. Extra nice appliances and carpet on 3/4 acre. Priced Right. Home Realty. 639-2241. 1

**For Sale:** 3 1/2 Acres plus large brick home, extra apartment. Could really be a showplace. Call 632-2766. Norma Medford Realtor. 1

**For Sale:** 1315 Edgewood, Brand new and all the extras including fireplace. Let us show you this one today. Home Realty. 639-2241. 1

**FM 2021** - No City Taxes!! Custom built, 3 BR 2 B Brick in excellent condition. Spacious family room, modern kitchen built-ins, cheery dining area. 1 1/3 acres. Call 2-2222. Janie Chappell Realtor. 1

**Mini-Farm** - 4 BR Frame on 3 acres. Barn & shed. A. Bresie Realtor, 632-1081. 1

**Brand New & Charming** - 3 BR, WBFP, large living area all for \$41,500!! A. Bresie Realtor - 632-1081. 1

**For Sale:** New home in Idlewood. 3 BR 2 full B, large Family Room w/ fireplace. \$42,900. 632-3854 for appointment. 1

**For Sale:** 2 Beautiful wooded lots located near Toledo Bend Lake. Asking Price, \$4,500 each lot. Call 691-6019 in Houston. 1

## Boats

**For Sale:** 1974 Hydre Sport Bass rig, fully equipped. 875-2345.

**For Sale:** '77 Cajun Mach IV bass boat, best you can buy. 115 Evinrude, C.B., trolling motor, depth finder, 2 ice-boxes, 2 live wells, used once. Take over payments. Call after 6:00, 853-2085.

**For Sale:** 15' Quachita Bass Boat, 50 HP Johnson, dilly trailer, fully loaded. Good condition. 632-3949.

**For Sale:** 15' Glasstron boat V-156 walk thru, 85 HP Chrysler engine, shoreline trailer. 876-5361.

**For Sale:** '77 Cajun Bass Boat, Mark II, '77-85 HP Motor (Evinrude), 2 gas tanks, 2 batteries, life jackets, trolling motor, boat cover, easy loader trailer. Phone 634-2402.

**For Sale:** 40 HP Evinrude O.B. - Manual start - Needs minor repair - \$85.00 - 824-2104 anytime.

1975 Ranger Bass Boat. 16 ft., 75 Johnson, clean, fully loaded, rigged for tournament fishing 875-2553. Priced reasonable.

**For Sale:** '69 Glastron Boat, 15 foot, 60 HP Johnson. 9-2800.

**For Sale:** 12 ft. extra wide Monarch Boat with swivel seats & carpet. Trailer, 12HP Chrysler Motor. \$650. Call 632-2573 after 4. 2

**For Sale:** Boat, motor & trailer. A commercial fishing rig, in good condition. Only \$850. Call 634-7806. 2



**BEAUTIFUL ENERGY EFFICIENT** - 3 BR, 2 B in Crown Colony Country Club Sub Division. Ready for occupancy. Priced to sell this week! Low \$60's. Glass everywhere! Contemporary styling. Detached garage.

**BOB NEWTON**  
Office 632-2817 Mobile 634-0160



**NORMA MEDFORD**  
639-2231 632-2766  
1101 S. Chestnut Suite 202

**SPECIAL PLACE** - High ceilings, large rooms, central heat & air for comfort, 3 BR 2 B, fireplace - redecorate for real showplace.

**BARGAIN** - Brick 4 BR home, large fenced lot, gas CH/CA - \$32,500.

**CLEANEST** - Starter home, 3 BR 1 1/2 B, Brick, CH/CA, fenced, storage bldg., beautiful lot.

**TASTEFULLY DONE** - Older home with modern kitchen, lovely carpet, CH/CA, 3 BR, 2 B, well insulated.

**MOST ATTRACTIVE** - new home, brick, fireplace, blt-ins., Trout School.

**HUDSON** - Country home, 4 BR 2 1/2 B, fireplace, .9 acre, allowance for new carpet.

**APPRAISED** - 2.5 acres, nice frame home, fireplace, call for details.

**LOOP** - Excellent location, over 6 acres, can be divided.

**LAND** - 20 acres of beautiful timber, creek, frontage on Farm Road.

PHIL MEDFORD-639-2542  
LILA RICHARDSON- 639-2231  
PATSY M. HEAD- 632-3069  
NORMA MEDFORD-634-6393

Member Multiple Listing



824-2791 Res.  
1312 N. Timberland Dr.  
**REALTOR ASSOCIATES**  
MERLENE HENSON  
824-2450 Res.

**New Years Special!**

**OFF THE BUSY STREETS..** ..very nice neighborhood, 3 BR, 1 1/2 B, Brick, fenced back yard, mid 30's.

**We buy Equities**

Member Multiple Listing



634-8306  
VA COMMERCIAL & Residential Appraiser  
1021 South Chestnut

**NEW ON THE MARKET- 415 Trailwood Circle-** 3 BR, 2 B, contemporary- decorators delight.

**3 BR BRICK-** On 2 ac. WBFP, 2 mi. from lake.

**UNDER CONSTRUCTION-** Contemporary brick in new Southridge. Buy now and select your own colors.

**WEEK-END RETREAT-** All cedar house on 1/2 ac.

**MINI FARM-** 4 BR on 3 ac., barn & shed.

**EXCLUSIVE-** Custom home with swimming pool shown to qualified buyers only.

**ZAVALLA-** 10 Ac. with 2 frame houses.

**BRAND NEW-** 3 BR Brick, WBFP, \$41,500.

**COMMERCIAL FULLY EQUIPPED MECHANIC SHOP-** Spacious mobile home. Good operating business. Call for details.

**FULLY LEASED-** Over 6,000 sq. ft. office building. Good location near downtown.

**HANKS CREEK MARINA-** Sam Rayburn.

**LAND**

5 1/3 AC.- Inwood Terrace.  
707 AC.- Hwy. 7- \$850.

79 AC.- FM 1475- wooded.  
10 AC.- Slack School.

155 AC.- Hwy 7. Highly improved.  
5.6 AC.- Point on Sam Rayburn.

Sue Bresie, 632-1081  
Jane Cornelius, 634-9701  
Sarah K. Murray, 634-3565  
Arthur Bresie, 634-9469  
Harrell J. Moore, Sr., 632-4672  
Shirley Kelton, 872-4014

Member Multiple Listing



**Happy New Year!**  
It's simple:  
I want to be your  
Realtor  
639-2484 634-5738

For your top soil & fill dirt or Dump Truck or Backhoe Service Call  
**John Berry**  
at 634-7388

**Jordan & Assoc.**  
Member:  
**MLS**  
Hwy 69 N. Loop 287  
632-5800  
or 634-4822  
List with us, we will work for you.

**J.B. STUBBLEFIELD**  
REAL ESTATE  
516 N. TIMBERLAND  
639-2028 632-1856

**Lovely** - 3 BR, 2 B Brick, WBFP, near Civic Center.

**Builder's Dream** - Finish these two homes. Have one to rent. Another beauty for home.

**Great Income Potential** - Five apartments & 1 house. Close in.

**Neat** - 2 BR, 1 B, only \$9,500. Herty.

**Central** - 8 room frame on 12 acres, paved on 3 sides. \$29,500.

**9 acres** - near Redland Drive In. Will divide.

**Lot** - Near Rayburn - water & electricity. \$2,200.

**Commercial** - Lot 200' x 90'. Loop 287 Feeder. Next to Dairy Queen.

**Mobile Home** - Furnished, Lakewood. \$9,900.

**Farm RD 1475** - 2 BR, 1 B, Brick on 10 acres.

Member Multiple Listing  
PETE LANE - 632-2089  
EUDORA WHITE - 632-1856



## Wanted!

One Homeowner who wants a lifetime...roof installed at our cost (for our advertising purposes). Beautiful Alcoa four-way locking Aluminum "Countr existing Shake" panels will install over any pitched roof surface. WILL NOT LEAK! and...

- PROTECTS AGAINST FIRE
- DOESN'T HARBOR INSECTS OR SUPPORT MOSS & FUNGUS
- SAVES ON ENERGY TESTS CONDUCTED PROVED! 42 degrees less attic heat buildup than asphalt or wood shingles.
- WILL NOT BLISTER, PEEL, RUST, SPLIT, FLAKE OR CHIP.

**MANLEY & CO.**

P.O. BOX 646, LUFKIN, TEXAS  
634-5889

Clip This Coupon & Mail

Name.....  
Address.....  
Phone Number.....

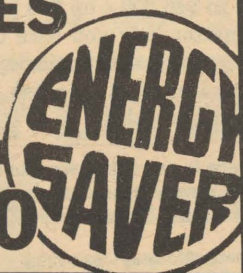
# BIG BOY INSULATION

- ★ Quality Materials
- ★ Quality Work

**FREE ESTIMATES**

Call

829-3410





# THE LUFKIN HOME BANNER CLASSIFIED ADS

## Animals

## Animals

## Animals

## Babysitting

## Help Wanted

## Work Wanted

**For Sale:** Young aggressive AKC Chihuahua stud, very small. 639-2537

**For Sale:** Poodle puppies. Call 897-5274.

**For Sale:** Chickens, ducks, geese, quail, and pheasants, also ornamental pheasants. 876-5361.

**For Sale:** 5 yr. old quarterhorse mare. 632-4173.

**For Sale:** AKC Male Poodle, had all shots, 1 1/2 years old. Good child's pet. 632-5468 or 824-2715.

**For Sale:** Rare chicken, ring-necked pheasants, ornamental pheasants, quail, geese & ducks. 876-5361.

**Moving** - need caring home for 2 really fine cats. Brother & sister. 8 months old. 824-2856. 1

**For Sale:** AKC Registered Poodle puppies. 1 black male, 1 champagne male, 1 apricot female. 7 wks. old. Phone 897-5274 or 897-4749.

**Rabbits for Sale:** Pet bunny rabbits & young rabbits. Will butcher. 2700 Davisville Rd. 634-6043.

**UKC Reg. Blue tick** coonhound puppies for sale, 3 mos. old, champion bloodline. Has shots and papers call 875-3302 after 5 p.m.

**For Sale:** Nice young semental Bull. Dairy Guernsey cross. Artificially bred, pure-blood Guernsey mother. Phone 634-4957 - 632-3252.

**For Sale:** Animals, 12 Week old AKC German Shepherd male puppy, Black & Tan. 634-7829.

**For Sale:** UKC Reg. Treeing Walker Coon puppies with night champion bloodlines. 824-4655.

**For Sale:** 6 registered Polled Hereford Bulls. 9 months to 18 months old. 632-0162. 2

**For Sale:** AKC Red Doberman, \$100. 2

**Need Babysitter** for 7 month old baby & to pick up first grader at Kurth School. Call 634-2462.

**Experienced former schoolteacher** will do babysitting in home infant to 5 years. Licensed. 632-1881.

## Rental

**Wanted:** Would like to rent a 3 BR house for a family of 4. Phone 2-7057 after 5.

**Want to Rent or Lease** small farm or pasture, 40-100 acres. Call 632-3260.

**Help Wanted:** Cooks - Apply in person between 2:00 and 5:00 p.m. daily. E.E.O.C. Pizza Hut, 318 S. Chestnut.

**Needed:** women to show liquid embroidery. Get started without any investment. No experience required. Good supplementary income. Call 824-2978 after 5.

**Needed:** Lady to do cleaning in my home, one day a week. Would prefer you to have own transportation. For more details, call Glenda at 639-2372 days - night, 634-7434.

**Help Wanted:** Responsible adult to do housework weekly. References and interview required. Call 632-4887. 2

**Earn \$500** per 1000 stuffing envelopes. This offer is now available again. Free supplies. Send stamped self-addressed envelope for details. No calls or visits. Sheila Matchett, E1, P.O. Box 98, Huntington, Texas. 2

**Earn Money** easily, painting novelties. For details send stamped self-addressed envelopes to Sheila Matchett, E1, P.O. Box 98, Huntington. No calls or visits. 2

**Man Wanted:** Floor maintenance, 5 nights. Nacogdoches area. Preferred buffing experience. Will train. Write E.T.M.C. Rt. 1, Box 150 Lufkin for application.

**Work Wanted:** Welding day or night. Specializing in Trailer Mechanics, carpentry, barns, cattleguards, gates & etc. Ask for Garland Bates 853-2605 or 853-3112.

**Will do sewing** in my home. All work guaranteed. 824-2962. 1507 Nash Road, Fuller Springs.

**Will give Crochet Lessons** Wednesday through Saturday from 1 till 3 p.m. Will also do typing. 312 Box Factory Road.

**Wanted:** Student wants Data Processing work, know Keypunch, Basic, some Fortran IV. Call 632-5739 after 4.

Cont. on Pg. 2

## Mobile Homes

**For Sale:** '73 LaSalle Mobile Home, 12 x 65, 2 BR, 2 full baths, fully carpeted, partially furnished. Must see to appreciate. Take over payments of \$123.00 a month and assume our loan. Phone 2-5293. 1

**For Sale:** 14x80 1977 Mobile Home, 4 BR, 2 Bath on 1 acre leased land 5 miles from Lufkin. Hudson School District. \$3,500. equity, take up notes, \$187. Would consider nice travel trailer or car of same value as equity. Phone days 632-3570.

**For Sale:** Large 3 BR, 2 Bath Mobile Home w/built on utility room & a 24' den. On a large shaded 1/2 acre corner lot on Walnut Rd. in Hudson School Dist. 875-2664.

## MOBILE HOME MOVER

Local & long distance, bonded & insured. RRC SMC 30519. Sid Miller, 632-3849.

All Work 40 Years Guaranteed Experience  
**GREEN'S BICYCLE SHOP**  
All speeds And Models Repaired  
Phone 612 Groesbeck Lufkin, Texas 634-9575



## MONUMENTS GIPSON'S

1515 So. Chestnut

## EARL MOTT

Oil Painting Classes

\$15 - 4 Weeks

Mon. & Tues.....9-12  
Thurs.....6-9

2204 N. Raguet

Lufkin 632-1974

## FOR LEASE: RESTAURANT

Prime location  
Close to  
Angelina Mall

639-2442 or  
632-4106

**Pete's LIQUOR STORE**  
*Champagne for the Holidays*  
Hwy 94  
**831-2964**

Let's Trade We Finance Buy With Savings  
Our Own Notes  
**Dixon Furniture**  
Buy-Sell-Rent and Trade  
New & Used Furniture  
Hershel Dixon Owner  
Home Ph. 634-7851  
Laurel and Atkinson  
Bus. Phone 632-2118

Kinfolks are coming for the Holidays  
Gotta get things spruced up right.  
Better have us cover that couch and chair  
With something Pretty and bright.  
**BOLLIER CUSTOM UPHOLSTERY**  
Free Estimates Phone 634-7113  
Pick-up & delivery Night 634-4819  
2404 E. Denman Lufkin

**FIREWOOD**  
\$30 PICKUP LOAD  
**You Haul**  
853-2133 or 639-1822

**NATURAL FOODS**  
Complete Line of Health Foods  
**NATURAL VITAMINS**  
Books & Natural Cosmetics  
Dried Organic Fruits & Raw Nuts for Christmas Baking  
**SUNRISE NATURAL FOODS**  
Open Mon.-Fri. 9 a.m. - 5:30 p.m.  
Sat. 9 a.m. - 2 p.m.  
Located Next Door To Memorial Hospital  
1109 FRANK 634-5428

**U. S. POSTAL SERVICE**  
**LUFKIN, TEXAS**  
Announces an examination for clerk and carrier positions, written exams will be conducted to fill future vacancies. Apply by Jan. 20, 1978. 8 A.M. to 4:30 P.M. Mon./Fri. U. S. Post Office, 512 E. Lufkin Ave. An Equal Opportunity Employer.

**EMPLOYERS**  
**RAID** PLACEMENT SERVICE  
**PHONE 632-7754**  
MATCHING PEOPLE WITH JOBS  
Boiler Room Foreman...14, 000up. Fee Paid. 4-5 years experience. Great Benefits.  
Gen. Office.....425 up Work w/Medicare, Medicare forms. 35 hours week.  
Keypunch.....5720 Will train if college accredited course.

# KIMCO INC. NOW HIRING

**EXPERIENCED  
MIG  
WELDERS**



**APPLY IN  
PERSON  
OR SEND  
RESUME**

**STARTING RATE \$5.25 -CAN EARN IN EXCESS OF \$7.00/hr.  
EXCEPTIONAL FRINGE BENEFIT PACKAGE**  
Must be willing to work evening shift.

**711 Industrial Blvd.**

**P.O. Box 1848**

**Lufkin**





# DON'T LET FRIDAY *The* 13<sup>th</sup> KNOCK YOU OFF YOUR LADDER!

## X-TRA SPECIALS

Bush	SPANISH RICE		3/89 <sup>c</sup>
Gebhardt's	REFRIED BEANS	1 Lb.	3/89 <sup>c</sup>
Old El Paso	TORTILLAS	11 Oz.	89 <sup>c</sup>
Picante	SAUCE		49 <sup>c</sup>
Eatwell	JACK MACKERAL		49 <sup>c</sup>
	POPCORN	1 Lb.	19 <sup>c</sup>
Dinty Moore	BEEF STEW	1 Lb. 8 Oz.	89 <sup>c</sup>
Sweet Sue	CHICKEN STEW	1 Lb. 8 Oz.	79 <sup>c</sup>
Maryland Club	COFFEE	with \$7.50 Purchase 1 Lb. Can	\$2.99
Gold Medal	FLOUR	5 Lb. Bag	99 <sup>c</sup>
A.J. Yellow, Self-Rising or White	CORNMEAL		99 <sup>c</sup>
Jewel	SHORTENING	3 Lb. Can	\$1.49
Eagle Brand	CONDENSED MILK		69 <sup>c</sup>
Wagner	ORANGE DRINK		55 <sup>c</sup>
	SPAM	12 Oz.	99 <sup>c</sup>

## DELI.

POLISH SAUSAGE	69 <sup>c</sup>
CHILI DOG TRAY	3/1.19
HOT LINK TRAY	3/1.19
BBQ BEEF TRAY	3/1.19
SLICED BEEF TRAY	3/1.19

<b>BIG DAY THURS</b>	
PINTO BEANS AND HAM HOCKS with Trimmings	99 <sup>c</sup>
<b>BIG DAY FRI</b>	
BIG LIMA BEANS AND HAM HOCKS	99 <sup>c</sup>
CATFISH DINNER with Trimmings	\$1.19
<b>DAILY</b>	
BEEF STEW Pint	\$1.19

## DAIRY

Medium EGGS	59 <sup>c</sup>
Parkay MARGARINE	49 <sup>c</sup>

Hyde Park & Showboat	PORK N BEANS	4/99 <sup>c</sup>
Le Sueur	SWEET PEAS	39 <sup>c</sup>
Bruce	YAMS	45 <sup>c</sup>
Rotel	TOMATOES & CHILI	3/99 <sup>c</sup>
	TOMATO SAUCE	5/99 <sup>c</sup>
Hyde Park	CORN Cream Style or Whole Kernel	4/99 <sup>c</sup>
Libbey's	GREEN BEANS	4/99 <sup>c</sup>
Minute	RICE	89 <sup>c</sup>

THESE SPECIALS GOOD AT  
Mac's #1 - 1506 S. First  
Mac's #2 - 904 Ellis  
Mac's #3 - 607 N. Timberland

Borden's ICE CREAM	1/2 Gal. Round	\$1.19
ICEES (Star Wars Collector Glasses)	(Ice Included)	40 <sup>c</sup>
PEPSI OR BUBBLE UP	5 pack Qts	\$1.79

Hyde Park	SUGAR FROSTED FLAKES	20 Oz.	79 <sup>c</sup>
Ring Seal	MOTOR OIL		3/89 <sup>c</sup>
Hi-Dri	PAPER TOWELS		49 <sup>c</sup>
Mexene	CHILI BEANS		3/89 <sup>c</sup>
Showboat	BLACKEYED PEAS		4/99 <sup>c</sup>

## PRODUCE

BANANAS	Lb.	19 <sup>c</sup>
New SWEET POTATOES	Lb.	29 <sup>c</sup>
Delicious APPLES	Lb.	29 <sup>c</sup>
Yellow ONIONS	Lb.	15 <sup>c</sup>
Russett POTATOES	Lb.	12 <sup>c</sup>

## Meat Market - - Feed Lot Beef

Fresh Pork LIVER	Lb.	39 <sup>c</sup>	Hickory Smoked Slab BACON	By the Piece	Lb.	89 <sup>c</sup>	Fresh Pork NECK BONES	Lb.	39 <sup>c</sup>
Fresh Pork RIBS	Lb.	79 <sup>c</sup>	Armour's BOLOGNA	By the Piece	Lb.	79 <sup>c</sup>	Fresh PIGS FEET	Lb.	39 <sup>c</sup>

## MEAT SPECIALS

**Fresh Pork CHITTERLINGS**  
5 Lb. Pail  
**\$3.19**

**Choice Heavy Beef RIB EYE STEAKS**  
Lb.  
**\$3.29**

Breakfast Pork SAUSAGE	12 Oz. Roll	43 <sup>c</sup>
Fresh Water CATFISH	Sliced Lb.	\$1.19
Neuhoff's - Lone Star FRANKS	12 Oz. Pkg.	59 <sup>c</sup>
Extra Lean GROUND CHUCK	Lb.	99 <sup>c</sup>
Beef - Well Trimmed T-BONE STEAK	Lb.	\$1.69
Beef CHUCK STEAK	Lb.	89 <sup>c</sup>
Beef SIRLOIN STEAK	Lb.	\$1.39
Beef CHUCK ROAST	Lb.	89 <sup>c</sup>
Market - Pan sausage	Lb.	99 <sup>c</sup>

## Family Packs

**No. 1**  
5 LBS. OF EACH  
CALF  
CHUCK STEAK  
GROUND BEEF  
CHUCK ROAST  
FRYERS  
20 LBS.  
13.65

**No. 3**  
3 1/2 LBS. GROUND BEEF  
2 LBS. STEW MEAT  
2 LBS. PORK CHOPS  
3 1/4 LBS. PICNIC HAM  
3 LBS. CHUCK ROAST  
3 LBS. ROUND STEAK  
FOR ONLY  
19.95

**FREEZER WRAPPED FREE**  
Phone  
Mon-Sat. Noon  
**ORDERS 632-5680**

**No. 2**  
5 LBS. OF EACH  
CALF  
ROUND STEAK  
ARM ROAST  
GROUND BEEF  
FRYERS  
20 LBS.  
15.60

**No. 4**  
5 LBS. OF EACH  
CALF  
SIRLOIN STEAK  
RUMP ROAST  
GROUND BEEF  
FRYERS  
20 LBS.  
16.60

**No. 5**  
5 LBS. OF EACH  
CALF  
ROUND STEAK  
T-BONE STEAK  
SIRLOIN STEAK  
GROUND BEEF  
23.50

**MAC'S** The Little Supermarket With Big Supermarket Prices.

601 N. Timberland Dr.  
632-5680

Self-Service Gasoline Ice.

MEAT DEPT.

Deli.